



WSSA/WSWS Joint Annual Meeting **March 2-5, 2020**

Hyatt Regency Maui
Maui, Hawai'i



The WSSA/WSWS 2020 Program

A Message from the Chairs



Welcome to the 2020 joint Weed Science Society of America (WSSA) and Western Society of Weed Science (WSWS) Annual Meeting at the Hyatt Regency Maui. This venue is set upon 40 oceanfront acres on Maui's Ka'anapali Beach offering many activities including great beaches and numerous water sports, spa/fitness center, access to oceanfront golf, stargazing, and much more. Pre-conference events will include whale watching and a tour of the Monsanto Hawaii seed corn facility. A potential tour to Haleakala National Park is in the works as well - more information will be announced as it becomes available.

At this year's meeting, we are encouraging a more resort casual dress code; tropical/Hawaiian attire would be great! Most committee meetings will take place on Monday, March 2 in the morning or afternoon with some scattered on other days during the week. Check with your committee chairs for the exact time and location. The General Session and WSSA/WSWS Awards Ceremony will begin Monday at 4:00 PM in the Monarchy Ballroom. Our General Session will begin with a welcome and opening remarks from Dr. Sam Gon, senior scientist and cultural advisor for the Nature Conservancy of Hawaii. Dr. Gon is a native of Hawaii and has 40 years of experience in numerous conservation and land management projects. We are excited to have Dr. Gon join our meeting. Presidents Larry Steckel (WSSA) and Pat Clay (WSWS) will collaborate on the presidential address to the membership. The Awards Ceremony will include presentations of the WSSA and WSWS Annual Awards. Be sure to attend this session to help recognize all the awardees. Following the Awards Ceremony, WSSA/WSWS will host an awards reception beginning around 6:00 p.m. All registered attendees are welcome and encouraged to attend. Please be sure spouses and friends that accompany you have registered so that they may attend this fun event.

As in the past, we will begin Tuesday morning with the Poster Session and will again have multiple breakout sessions throughout the week with presentations addressing invasive plants in natural areas to the genetics of herbicide resistance to the latest herbicide technology. We think we have something for everyone. Also, join us for the 3rd WSSA Women in Weed Science Networking Event tentatively targeted for Tuesday at noon. In 2019, a network of mentors and mentees was created, and we look forward to a time of connection, reflection, and support at the 2020 annual meeting. All female attendees at the conference are welcome to attend the event, just sign up when you register so we have a seat for you! We are also excited to have BASF host a reception on Tuesday evening. If you have attended a recent WSSA meetings, you will recognize that this is always a great opportunity to visit with our BASF hosts and other members of the society and learn about some new product launches.

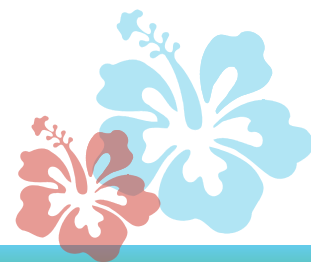
We are again conducting MS and PhD student poster and oral presentation contests. However, a new oral competition event is being offered in 2020 to both WSSA and WSWS students. This will be a Three-Minute Thesis Research Communication Competition (3MT™) developed by the University of Queensland, Australia (<https://threeminutethesis.uq.edu.au/>). It provides students with the opportunity to profile their research and enhance communication skills. A separate document will be available describing this activity in more detail including how students will be judged and the rules for the competition. A joint WSSA/WSWS student luncheon will take place on Wednesday where the students will conduct business and have a facilitated session focused on some issues that students face in graduate school. And finally, the student awards ceremony will take place late Wednesday afternoon followed by an organized “Students Night Out”, so there should be plenty of opportunities for our students to contribute in the 2020 meeting.

Tuesday through Thursday, we are going to host five symposia related to important and impactful subjects that need attention in Weed Science. These include: 1) Genomics of Weedy and Invasive Species - 2025 and Beyond, 2) The Ecological and Biodiversity Impact of Invasive Grass Species and Their Management, 3) 2020 Vision for Hawaiian Invasive Plant Management, 4) The Role of Intelligent Machines in Weed Management, and 5) Toxicology and Weed Science. The WSSA and WSWS will both host separate business meetings early Thursday morning. We hope that all members will attend their respective meeting to participate in the decision-making process on societal issues and board activities. Most professional activities will end by noon on Thursday but check the schedule once it is announced as a few things such as WSSA Board of Directors and a committee meeting or two may run into Thursday afternoon.

Special thanks to our Local Arrangements Chair, Dr. James Leary. Although he relocated to Florida from Hawaii last year, he has been very helpful with developing the program. In addition, thanks to Josh Atwood with the Hawaii Invasive Species Council in helping to identify our Keynote speaker. We would also like to thank Drs. Marty Schraer and Darrin Dodds for their help in organizing the student contests. Thanks also to Drs. Larry Steckel, Anita Dille, Scott Senseman, Pat Clay, and Andrew Kniss for their help and guidance in preparing the program. We had a tremendous group of loyal and committed folks who submitted great symposia ideas this year, some of which we could not accommodate but hope to have back in 2021 in San Antonio. We thank all our Section Chairs for helping to organize the program and our WSSA/WSWS meeting manager and executive secretary, Eric Gustafson, for his commitment to ensure a successful meeting. We are excited about the great participation and the many opportunities to exchange scientific information on weed science research, education and extension. We look forward to a productive and rewarding meeting.

Bill Curran
WSSA Program Chair and President-Elect

Corey Ransom
WSWS Program Chair and President-Elect



President's Message

This has been one crazy year to grow a crop. One artifact of this is that the spring planting season ended here in Tennessee sometime in August. As we enter what likely will be a very long, drawn out fall, I hope everyone has good fortune getting their field research out.

Our meeting plans for the 60th Annual WSSA meeting in Maui, Hawaii are coming together. The meeting will be held March 2-5, 2020 at the Hyatt Regency Maui. Bill Curran, our program chair, is working on a great program that will run the gamut of extension, research, and education activities in weed science. Dr. Curran is working closely with Eric Gustafson, our Executive Secretary, to finalize activities and events. They have plentiful events and tours available to enjoy the island and we look forward to what Maui has to offer. Symposia are going to be plentiful once again this year and the topics include:

- 2020 vision for Hawaiian Invasive Plant Management
- The role of intelligent machines in weed management
- Genomics of weedy and invasive species – 2025 and Beyond
- The ecological and biodiversity impact of invasive grass species and their management
- Toxicology and weed science



Our discipline has most definitely been connected to newsworthy items in the last several months. Glyphosate continues to be on TV in a large way both in the news and in numerous commercials, mostly sponsored by law firms. The WSSA has been asked to give our opinion and we have responded with what I feel is a very good statement on this on-going issue. Many thanks to Dr. Scott Senseman for chairing the committee to draft this statement concerning glyphosate and to all the hard work from the volunteers on his committee.

Dicamba issues are still on the forefront in the Midwest in MidSouth regions of the United States. Unfortunately, reports from State Department of Agricultures would indicate that off-target dicamba issues have gotten worse in some of the big soybean producing states in the Midwest and are still a persistent issue across the MidSouth. Our scientists continue to be connected with decision makers and our Executive Director of Science Policy, Lee Van Wychen, has kept us in touch with key individuals to discuss these issues surrounding dicamba that have no easy answers. There has never been a more important time in our society's history where strong science and connection to decision makers have come together. I am confident that we can continue to address these issues to the best of our abilities and progress our discipline in the most positive ways.

I look forward to seeing all of you in Maui in March. It has been an active year so far and we are pleased that we continue to get feedback from many of you on WSSA issues. Please do not hesitate to contact me, Eric Gustafson, Lee Van Wychen or other members of our Board of Directors if you have issues or suggestions related to WSSA.

Larry Steckel
President, WSSA

Tentative Conference Agenda

Saturday, February 29, 2020

| | |
|-------------------|-------------------------|
| 7:00 AM - 5:00 PM | WSSA Board of Directors |
|-------------------|-------------------------|

Sunday, March 1, 2020

| | |
|-------------------|-------------------------|
| 7:00 AM - 5:00 PM | WSSA Board of Directors |
|-------------------|-------------------------|

| | |
|--------------------|-----------------------|
| 9:00 AM - 11:00 AM | Whale Watching Cruise |
|--------------------|-----------------------|

Monday, March 2, 2020

| | |
|-------------------|--------------------------------------|
| 7:00 AM - 8:00 AM | WSSA Board/Committee Chair Breakfast |
|-------------------|--------------------------------------|

| | |
|-------------------|-------------------------|
| 7:00 AM - 3:00 PM | WSWS Board of Directors |
|-------------------|-------------------------|

| | |
|-------------------|-------------------------|
| 8:00 AM - 4:00 PM | WSSA Committee Meetings |
|-------------------|-------------------------|

| | |
|--------------------|-----------------------|
| 9:00 AM - 11:00 AM | Whale Watching Cruise |
|--------------------|-----------------------|

| | |
|-------------------|---|
| 4:00 PM - 6:00 PM | General Session and WSSA/WSWS Awards Ceremony |
|-------------------|---|

| | |
|-------------------|--|
| 6:00 PM - 8:00 PM | Welcome Reception - <i>sponsored by WSSA & Syngenta</i> (heavy hors d'oeuvres and cash bar) |
|-------------------|--|

Tuesday, March 3, 2020

| | |
|-------------------|--|
| 7:00 AM - 9:00 AM | Poster Session (Even Numbered Presentations) |
|-------------------|--|

| | |
|-------------------|----------------|
| 9:00 AM - 4:00 PM | Paper Sessions |
|-------------------|----------------|

| | |
|--------------------|--|
| 9:00 AM - 12:00 PM | Genomics of Weedy and Invasive Species-2025 and Beyond – Jugulam |
|--------------------|--|

| | |
|--------------------|---|
| 9:00 AM - 12:00 PM | The Ecological and Biodiversity Impact of Invasive Grass Species and Their Management – Rew and Prather |
|--------------------|---|

| | |
|--------------------|--------------------------------|
| 12:00 PM - 2:00 PM | Women in Weed Science Luncheon |
|--------------------|--------------------------------|

| | |
|-------------------|-----------------------------|
| 4:00 PM - 5:00 PM | WSWS What's New In Industry |
|-------------------|-----------------------------|

| | |
|-------------------|---------------------------------|
| 5:00 PM - 8:00 PM | Luau - <i>sponsored by BASF</i> |
|-------------------|---------------------------------|

Wednesday, March 4, 2020

| | |
|-------------------|---|
| 7:00 AM - 8:00 AM | WSSA President's Breakfast with Regional Presidents |
|-------------------|---|

| | |
|-------------------|---|
| 7:00 AM - 9:00 AM | Poster Session (Odd Numbered Presentations) |
|-------------------|---|

| | |
|-------------------|----------------|
| 9:00 AM - 4:00 PM | Paper Sessions |
|-------------------|----------------|

| | |
|-------------------|--|
| 9:00 AM - 4:00 PM | The Role of Intelligent Machines in Weed Management – Fennimore and Clay |
|-------------------|--|

| | |
|--------------------|---|
| 9:00 AM - 12:00 PM | 2020 Vision for Hawaiian Invasive Plant Management – Daehler and Clements |
|--------------------|---|

| | |
|--------------------|---|
| 11:00 AM - 2:00 PM | Graduate Student Luncheon (open to all students registered for the meeting) and Student Business Meetings |
|--------------------|---|

| | |
|-------------------|----------------|
| 2:00 PM - 5:30 PM | Seed Corn Tour |
|-------------------|----------------|

| | |
|-------------------|--------------------------|
| 4:00 PM - 6:00 PM | WSSA/WSWS Student Awards |
|-------------------|--------------------------|

Thursday, March 5, 2020

| | |
|-------------------|-------------------------|
| 7:00 AM - 9:00 AM | WSSA Business Breakfast |
|-------------------|-------------------------|

| | |
|-------------------|-------------------------|
| 7:00 AM - 9:00 AM | WSWS Business Breakfast |
|-------------------|-------------------------|

| | |
|--------------------|----------------|
| 9:00 AM - 12:00 PM | Paper Sessions |
|--------------------|----------------|

| | |
|-------------------|-------------------------|
| 1:00 PM - 2:00 PM | WSWS Board of Directors |
|-------------------|-------------------------|

| | |
|-------------------|-------------------------|
| 1:00 PM - 4:00 PM | WSSA Board of Directors |
|-------------------|-------------------------|

Student Events

Graduate Student Poster Contest

There will be a graduate student poster contest in two groups – one for Master's students and one for Ph.D. students. All registered students of the WSSA and WSWS may participate. Students wishing to participate will designate this at the time of abstract title/ author submission.

WSSA/WSWS Graduate Student Luncheon

Thursday, March 5, 2020

11:00 PM to 2:00PM

Open to all students registered for the meeting.

Oral Presentation Contest

There will be two oral presentation contests, one for MS students and one for PhD students. Open to WSWS students only.



Women in Weed Science Lunch

You are invited to participate in the third annual “Women in Weed Science” networking event sponsored by Corteva Agriscience on Tuesday, March 3, from 12:00-2:00 PM. All who are interested in attending, including graduates and undergraduates students, spouses, and academic/industry professionals are encouraged to register for the event by checking the appropriate box on the general WSSA registration form. Registrants have the option of finding or becoming a mentor by selecting so on the registration form and will be paired prior to the event; however, participation in the mentorship aspect of this event is not required for event attendance! This event will focus on connecting women within weed science through networking activities and mentorship to promote collaboration, camaraderie, and community. Questions? Please contact the event coordinator, Cara McCauley, at cara.mccauley@corteva.com.



Hyatt Regency Maui

200 Nohea Kai Drive
Lahina, Hawaii 96761
1-808-661-1234



Room Rates (Single Occupant)

| | |
|------------------------|----------|
| Golf/Mountain View | \$269.00 |
| Partial Ocean View | \$294.00 |
| Deluxe Ocean View | \$314.00 |
| Premier Ocean Front | \$336.00 |
| Students (Resort View) | \$245.00 |

Reservation details:

Reservations for the event may be made by individuals directly with the Hyatt Regency Maui. Call 808-661-1234 for help and information. This room block expires January 27, 2020. The following links may be used as well.

Attendee: <https://www.hyatt.com/en-US/group-booking/OGGRM/G-WS20>

Student: <https://www.hyatt.com/en-US/group-booking/OGGRM/G-WS20/STUDENTS>

Transportation:

SpeediShuttle in Maui provides shared and exclusive shuttles as well as sedan, SUV and limousine service to and from Kahului Airport (OGG). Upon arrival, please check in at the SpeediShuttle counter located in baggage claim. Book online or email hmr@speedishuttle.com. To reach by phone, please call (808) 667-4910.

Meeting Registration:

Each attendee must fill out a registration form, registration rates include a one-year WSSA membership. Additional information may be found at: <http://wssa.net/meeting/2020-annual-meeting/>

More information:

If you have further questions, please feel free to contact the WSSA office at 720.977.7940 or email at info@wssa.net. We are looking forward to an excellent program.



2020 Tour Options & Information

Maui Whale Watching Cruise

Sunday, March 1, 2020, 9:00 am - 11:00 am

Monday, March 2, 2020, 9:00 am - 11:00 am

Cost per person: \$65.00 (price is the same on both days)

Whalewatch with the experts on Maui's top-rated ecotour and see these amazing creatures in their natural wild habitat. Whale watching season in Maui is November-May with peak season typically running between mid-January and March.

This Whalewatch is led by certified Marine Naturalists for fun and informative interpretation of humpback whale behaviors and characteristics. Watch mothers and calves interact, see males compete for females, hear underwater whale songs – every trip is unique.

Humpback whales are by and large the most common type of whale you'll see in Maui. However, there are also several other species found in the surrounding area, including melon-headed, short-finned pilot, pygmy, and endangered false killer whales. Our expert marine naturalists will help you identify exactly what kind of whales you come across during your cruise.

More information available at: <https://www.pacificwhale.org/cruises/maui-whalewatch/>

YOUR TRIP INCLUDES

- Transportation from Hyatt to harbor and return to Hyatt
- Underwater hydrophones to hear whale songs
- Onboard Jr. Naturalist Program for kids
- Reef Safe Sunscreen – 6 oz. bottles available for \$10 onboard (40% discount)
- Filtered water
- Full-color marine wildlife poster
- Whale sightings guaranteed or go again free

ALSO AVAILABLE

- Affordable rentals of cameras and binoculars
- Snacks and beverages for purchase, including soda and juice



Tour Options continued

Seed Corn Tour

Wednesday, March 4, 2020, 2:00 pm - 5:30 pm

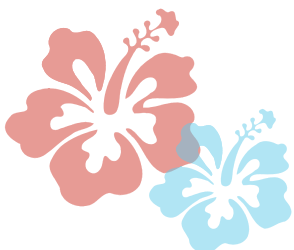
Cost per person: \$52.00
(50 people maximum)

Although the history of corn in Hawai'i stretches back to the missionary era, its dominance in the Hawaiian seed industry dates to the 1960's, when small scale winter nurseries for corn breeding were established on multiple islands. For agricultural companies, the year-round growing climate in Hawai'i offers the ideal place for plant breeding research – three to four growing cycles per year mean that the development and production of new seeds proceeds much faster than on the US mainland.

Monsanto Hawaii is the only major biotech company operating on Maui, cultivating approximately 2% of the available growing land on the island. More than 90% of Monsanto Hawaii's crops are corn, which cannot cross-pollinate with any of Hawaii's native plant species. The seed crop industry in the state of Hawai'i has an economic value of more than \$550 million, and employs 1,400 Hawaiians, representing approximately 33% of all jobs generated by Hawaii's agricultural sector.

This 90-minute tour will showcase the seed corn breeding process and technology used at one of Monsanto's nursery farms on Maui. Participants will learn about Hawaii's seed industry, Monsanto's research efforts globally and locally, the work being done in Hawaii and the products being produced. The tours also offer a first-hand look at the company's local operations.

Transportation from the Hyatt to the Monsanto facility and back to the Hyatt is included.



About Maui

Airports

The main airport on Maui is Kahului Airport (OGG). Many airlines offer non-stop flights direct to Maui, or you may fly into Honolulu International Airport (HNL) on Oahu and catch a short 30-minute commuter flight to Maui.

When departing from Hawaii, all baggage must first pass through Agriculture Quarantine before proceeding to the airline counter for check-in. It is best not to bring fruit or other plants, unless you show proof that you are allowed to export them. Without proof, fruits, vegetables and plants will not clear Customs and will be confiscated.



Weather

March in Maui has an average high temperature of 71 degrees and an average low temperature of 55 degrees. March is the end of the wet season, so some rain may be possible. If traveling in the highlands (such as Haleakalā National Park) temperatures may drop as low as the 40's, so bring warm clothing.



Nearby Activities & Attractions

The Hyatt Regency Maui offers a variety of on-resort activities, including the Drums of the Pacific Lu'au, athletic club, rooftop stargazing and astronomy programs and daily feedings of the resorts' resident penguins.

The resort also offers a variety of restaurants, from formal to casual, that offer fare including steaks, local seafood and authentic Hawaiian cuisine. Several outlets serve breakfast options ranging from coffee to

local fruit smoothies, and the #1 shave ice on Maui can be found at Ululani's.

Off-resort, you can find 2 nearby golf courses, drive the scenic Road to Hana, explore shopping in nearby Lahaina or relax on one of the islands' many beaches.

Maui Adventures

For those looking to explore the outdoors and feed a taste for adventure, options include helicopter tours, waterfall hikes and kayaking on Maui's inland waterways. Family-friendly offerings range from glass-bottom boat tours to the Maui Ocean Center aquarium for younger children, or submarine tours and mermaid lessons for older kids.

Agri-tourism options are also available, including pineapple plantations, coffee and lavender farms, craft beverages and farm-to-table restaurants.



Activities on Your Own

Please note: All activities listed on this page are on your own time and at your own expense and are not provided by or connected to the WSSA/WSWS conference. [Click here](#) for more details. Please contact hotel concierge directly for questions and to make reservations. See concierge for complementary Hyatt Maui activities.

| Activity | Description | Price per Person |
|-------------------------------------|---|--|
| Hyatt Exclusive | | |
| Tour of the Stars | Learn about Polynesian celestial navigation | Adults \$30+, Children \$20 |
| Flying High | | |
| Maui Spectacular Helicopter | West Maui by air, including Haleakala volcano and Hana rainforests | A-Star \$319.20 + taxes Eco-Star \$367.20 + taxes |
| Maui Complete Island Helicopter | Best of East and West Maui, including Haleakala crater and rainforest waterfalls | A-Star \$249.99 + taxes Eco-Star \$367.20 + taxes |
| West Maui & Moloka'i Helicopter | West Maui and the world's tallest sea cliffs on the north shore of Moloka'i | A-Star \$199.99 + taxes Eco-Star \$255.20 + taxes |
| Island Hopper | | |
| Pearl Harbor Tour | Pearl Harbor Visitor Center, USS Arizona Memorial, USS Missouri and more | Adults \$483+, Children \$367+ |
| Volcano Air Tour | Hawai'i and Maui islands, see the active Kilauea volcano, Haleakala, and more | Kahului \$499.00 Kapalua \$549.00 |
| Land Lovers | | |
| Hana Guided Van Tour | Explore the Hana coastline by van, including waterfalls and freshwater pools | Adults \$183.77, Senior \$177.99, Children \$110.26 |
| Haleakala Guided Van Tour | Sunrise or Sunset atop the largest dormant volcano in the world | Adults \$151.52+, Senior \$147.99+, Children \$90.91+ |
| The Aquatic Life | | |
| Molokini Snorkel & Turtle Encounter | Snorkel in a pristine marine preserve and spot Hawaiian sea turtles | Adults \$107.95, Children 12 and under free 1 per adult |
| Adventure Molokini | Spot native Hawaiian wildlife with a certified naturalist | Adults \$140, Children \$80 |
| Lana'i Snorkel & Dolphin Adventure | Cruise the coastline of Lana'i and snorkel along colorful reefs | Adults \$97.95, Children 12 and under free 1 per adult |
| Sailing Catamaran Snorkel Cruise | Sailing and snorkeling in warm tropical waters | Adults \$131, Children \$75+ |
| Submarine Tour | Explore underwater worlds from an air-conditioned submarine | Adults \$124, Children 12 and under free 1 per adult |
| Whale Watch, Parasail or Jetski | 2-hour whale cruise or explore Maui's coastline from above or via jetski | Whale Watch \$38, Parasail \$68.98, Jetski \$79 |
| Sunset Cruise | Cruise Maui's coastline at sunset, dinner option available | Adults \$87+, Children \$55+ |
| Adrenaline Addiction | | |
| Bike Down the Volcano | Drive to the top and bike down through multiple climate zones, picture stops guaranteed | Sunrise \$245, Day tour \$215 |
| Waterfall Hike or Rappel | Hike to freshwater pools or rappel down falls up to 50 feet tall | Hike \$133+, Rappel \$219+ |
| Zipline Adventure | Swoop down valleys and soar above the tree canopy | Kaanapali \$169.95, Kapalua \$179.95 |
| ATV Excursion | See the West Maui Mountains in an exciting off-road trek | Adults \$204, Children \$149 |

For more details on the activities listed above, please [click here](#) or contact Hyatt Regency Maui concierge.

Policy Against Harassment at Conferences

Statement of Policy

The Weed Science Society of America (WSSA) is dedicated to providing a harassment-free experience for everyone at WSSA events. WSSA seeks to provide a conference environment in which diverse attendees may learn, network and enjoy the company of colleagues in a professional atmosphere. WSSA does not tolerate harassment of attendees in any form. Use of sexual or discriminatory language and imagery is not appropriate for any WSSA event. Violators of this Event Anti-Harassment Policy may be sanctioned or expelled from the event at the discretion of the WSSA event organizers.

Definition of Harassment

Harassment is verbal, written or physical conduct that denigrates or shows hostility or aversion toward an individual because of their race, color, religion, sex, sexual orientation, gender identity or expression, national origin, age, disability, marital status, citizenship, genetic information, military status or any other characteristic protected by law or that of relatives, friends or associates. Harassing conduct includes but not limited to deliberate intimidation or hostile acts; stalking; following; harassing photography or recording; sustained disruption of talks or other events; and inappropriate physical contact. Attendees asked to stop any harassing behavior are expected to comply immediately.

Definition of Sexual Harassment

Sexual harassment constitutes discrimination and is illegal under federal, state and local laws. Sexual harassment refers to verbal, physical, and visual conduct of a sexual nature that is unwelcome and offensive to the recipient. By way of example, sexual harassment may include such conduct as sexual flirtations, advances, or propositions; verbal comments or physical actions of a sexual nature; sexually degrading words used to describe an individual; an unwelcome display of sexually suggestive objects or pictures; sexually explicit jokes; and offensive, unwanted physical contact such as patting, pinching, grabbing, groping, or constant brushing against another's body. Attendees asked to stop any sexually harassing behavior are expected to comply immediately.

Scope of Policy

This Anti-Harassment Policy applies to all attendees at WSSA events, including participants, guests, staff, contractors, and exhibitors. All attendees are expected to comply with this Event Anti-Harassment Policy at all event venues and event-related social events.

Reporting an Incident

If you are being harassed, notice that someone else is being harassed, or have any other concerns, please contact an WSSA staff member immediately. WSSA staff can be identified by the official staff badge which is white with the blue and green WSSA logo, their name and title. All complaints will be treated seriously and will be investigated promptly.

WSSA staff will be happy to help attendees contact venue security or local law enforcement, provide escorts, or otherwise assist those experiencing harassment to feel safe for the duration of the event. Additional information on reporting an incident at a specific event can be found below.

Disciplinary Action

All reports of harassment will be directed immediately to the WSSA's Conference leadership team who may consult with and engage other WSSA staff, leaders and legal counsel as appropriate. Event security and/or local law enforcement may be involved, as appropriate based on the specific circumstances. In response to a report of harassment, the WSSA Conference leadership team or WSSA staff may take any action they deem appropriate. Such actions range from a verbal warning to ejection from the event without a refund. Repeat offenders may be subject to further disciplinary action, such as being banned from participating in future WSSA conferences or events.

Reporting Procedure

Individuals who believe they have been the victims of conduct prohibited by this policy or believe they have witnessed such conduct should discuss their concerns with Eric Gustafson, WSSA Executive, any WSSA staff, or any member of the WSSA Executive Committee, concerns can be transmitted electronically via info@wssa.net. Weed Science Society of America encourages the prompt reporting of complaints or concerns so that rapid and constructive action can be taken before relationships become irreparably strained. Therefore, while no fixed reporting period has been established, early reporting and intervention have proven to be the most effective method of resolving actual or perceived incidents of harassment.

The Value of Your Membership

What is the Weed Science Society of America?

The Weed Science Society of America (WSSA) is an organization that fosters an awareness of weeds and their impact on our environment. We provide science-based information to the public and government policymakers while promoting research, education, and outreach activities.

What do WSSA Members Do?

WSSA members are actively involved in addressing some of the most important issues facing our modern world. Our objectives are to:

- Maximize crop yields and feed a growing population as cropland is lost to urbanization
- Eliminate aquatic weeds that clog our waterways and impact water quality
- Control invasive weeds that compromise biodiversity in our rangelands and wild areas
- Develop integrated weed management techniques for conventional and organic farming
- Reduce the impact of weeds on human health and allergies
- Develop new and improved integrated weed management strategies in response to climate change
- Manage weed resistance to herbicides
- Prevent soil erosion by optimizing the role of tillage in weed control
- Manage weeds that fuel devastating fires

What are the Career Paths in Weed Science?

Weed scientists are employed in a diversity of professions:

- University teaching, research, and agricultural and urban extension education
- Development, evaluation, and enforcement of weed control regulations with government, universities, and private industry
- Design and implementation of effective integrated weed management systems with private pest management consulting firms

- Research, product development, sales, and marketing with companies specializing in weed management in croplands, aquatic habitats, parks, and urban areas

To prepare for a career in weed science, you typically need a bachelor's degree in agronomy, biochemistry, biology, chemistry, ecology, horticulture, plant physiology, soil science, or a related field. For a research position in academia or industry, an advanced degree is required.

Why Become a WSSA Member?

Membership in WSSA is open to individuals across North America and around the globe who are interested in the study of weeds and their impact on our environment. Benefits include:

- Subscriptions to three outstanding journals: Weed Science, Weed Technology, and Invasive Plant Science and Management
- A quarterly online newsletter
- Continuing education and workshops
- Reduced rates at WSSA's annual meetings
- Interaction with regional weed science societies
- Opportunity to provide scientific expertise that impacts national policy and regulation

The cost to be a WSSA member has remained steady for the past 4 years, and the membership fee is included as part of your conference registration. The national reach of WSSA, combined with the journal subscriptions that are included and the frequent educational offerings are worth far more than the cost of membership, and becoming a member expands your professional network many times over. So remember, when you pay your conference registration, you are gaining much more than just a few days in Hawaii with your colleagues, you are gaining a year's worth of networking, educational opportunities and access to the best journals in the field. We appreciate your membership and hope you enjoy all that Maui has to offer!

Registration Form

WSSA / WSWs Joint Annual Meeting

March 2 - 5, 2020

Online registration at:

https://wssa.memberclicks.net/index.php?option=com_mcform&view=ngforms&id=2027724#/

Print or type name clearly **AS YOU WISH IT TO APPEAR ON YOUR BADGE**. Copy this form for additional registration forms. One form per attendee (only a spouse/guest may be included on the same form.) Spouse/guest must be registered to attend the reception on Monday evening.

First Name _____ Last Name _____

Organization _____

Street Address _____

City _____ State _____ Zip Code _____

Phone _____ Fax _____ Email _____

Please specify any special needs _____

Spouse/Guest Name (if registering) _____

| Registration Fees (all payments in US dollars) | On/Before Dec. 25 | Dec. 26 - Jan. 14 | Jan. 15 & After | Amount: |
|---|---------------------------------|---------------------------------|---------------------------------------|---------|
| Full Registration | | | | |
| WSSA Member* | \$700.00 | \$800.00 | \$900.00 | \$ |
| WSSA Student** | \$150.00 | \$150.00 | \$150.00 | \$ |
| WSWS Member* | | | | |
| WSWS Student ** | | | | |
| Guest | \$75.00 | \$75.00 | \$75.00 | \$ |
| WSSA/WSWS Emeritus/Retired Fellow*** | Complimentary | Complimentary | Complimentary | |
| Special Events - Optional | | | | |
| IWSS Renewal | \$30.00 | \$30.00 | \$30.00 | \$ |
| Women in Weed Science Luncheon | Complimentary | Number of tickets needed: _____ | | |
| Graduate Student Luncheon | Complimentary | Number of tickets needed: _____ | | |
| Student Night Out | Complimentary | Number of tickets needed: _____ | | |
| Please select whether you would like to be a Mentor or Mentee | Mentor <input type="checkbox"/> | Mentee <input type="checkbox"/> | No thank you <input type="checkbox"/> | |
| 2020 Tour Options - please choose carefully based on age/status/etc. | | | | |
| Whale Watching Cruise, Sunday, March 1 | | \$65.00 | | \$ |
| Whale Watching Cruise, Monday, March 2 | | \$65.00 | | \$ |
| Seed Corn Tour, Wednesday, March 4 | | \$52.00 | | \$ |
| Memberships - Optional | | | | |
| WSSA membership if registered as WSWs | | \$175 | | \$ |
| WSWS membership if registered as WSSA | | \$30 | | \$ |

Full Registration and Student Registration includes the Awards Reception on Monday Evening.

Total: \$ _____

*WSSA or WSWs Member registration includes one year membership (2020)

**Student registration includes attendance at the Awards Reception, the Graduate Student Luncheon and a 2020 WSSA or WSWs Student Membership.

***WSSA/WSWS Emeritus or Retired Fellows may register for the annual meeting without a fee. This includes the award reception on Monday evening.

Payment Information

WSSA / WSWS Joint Annual Meeting
March 2 - 5, 2020

Method of Payment:

Check payable to "WSSA" Check payable to "WSWS"

Please charge my: Visa MasterCard American Express Discover

Card Number:

Expiration Date: / CVC Code: *4 digits for American Express, 3 digits for all other cards*

Billing Zip Code (required): _____

Signature: _____

Print name: _____

**Do not send cash. Please make checks payable to "WSSA" or "WSWS."
All fees must be paid in US funds and drawn on US banks.**

Cancellation Policy

Written notice of cancellation received on or before February 1, 2020 will be refunded minus a \$50 processing fee. No refunds will be issued for cancellations after February 7, 2020.

Return Form To:

WSSA/WSWS Meeting Registration
12110 N. Pecos St., Suite 220
Westminster, CO 80234
info@wssa.net or info@wsweedscience.org
Fax: 303-458-0002

For questions, call 720-977-7940 or 303-327-8016

FOR OFFICE USE ONLY:

Method of Payment: Check Credit Card Cash

Date: _____ \$Paid: _____ #: _____

