

# **WORKING LANDSCAPES**

**PROVIDING FOR THE FUTURE**

**Joint Annual Meeting**

**Society for Range Management  
and  
Weed Science Society of America**

**Denver, Colorado  
February 7-11, 2010**

**Society for Range Management  
Supplement to Rangelands**



## Our commitment to the cattle industry is growing.

With a broad portfolio of herbicides available to them, our Range & Pasture Specialists can help you find products to help increase forage production, control brush or create wildlife habitat. These consultants can make recommendations based on your land and your needs.



[www.RangeAndPasture.com](http://www.RangeAndPasture.com)

1-800-263-1196

\*\*Trademark of Dow AgroSciences LLC  
Grazon P+D, Tordon 22K and Surmount are federally Restricted Use Pesticides. Spike 80DF is registered for range and pasture use only in AL, KS, LA, MD, MS, NM, OK and TX. State restrictions on the sale and use of Spike 80DF apply. Chaparral, GrazonNext and Milestone are not registered for sale or use in all states. Contact your state pesticide regulatory agency to determine if a product is registered for sale or use in your state. Label precautions apply to forage treated with Chaparral, GrazonNext and Milestone and to manure from animals that have consumed treated forage within the last three days. Consult the label for full details. Always read and follow label directions.

## Our Herbicide Portfolio

**Tordon® 22K**  
Herbicide

**Grazon® P+D**  
Herbicide

**Spike® 20P**  
Herbicide

**Spike 80DF**  
Herbicide

**Remedy®**  
Herbicide

**Redeem® R&P**  
Herbicide

**PastureGard®**  
Herbicide

**Surmount®**  
Herbicide

**Milestone®**  
Herbicide

**GrazonNext™**  
Herbicide

**Chaparral™**  
Herbicide

R38-000-011 (5/08) BR  
010-57674  
DARPRANC9057



# WELCOME SRM-WSSA Annual Meeting and Trade Show

## TABLE OF CONTENTS

Welcome-Co-Chairs.....	4
Welcome – Societies’ Presidents.....	5
Traveling to Denver.....	6
Hotel information.....	8
Meeting facilities.....	9
Registration information.....	10
Trade Show/Silent Auction information.....	12
Board/Council/Committee Meetings –At-A-Glance.....	13
Technical/Social Activities.....	15
Student Activities.....	20
Career Development and Job Fair.....	23
Plenary Session.....	26
Technical Program-At-A-Glance.....	27
Symposia.....	28
Optional Skiing.....	35
Dance/Taste of Colorado Social.....	36
2010 Planning Committee.....	37

**Please Note that the information in this Pre-Convention publication is correct at the time of printing, but may change. Check the SRM Annual Meeting Website for changes at <http://www.rangelands.org/denver2010/> .**

Cover photo: Longs Peak from near Longmont, Colorado

Painting cutouts within publication courtesy of Barbara East. See complete painting on cover of August, 2010 *Rangelands* or at the SRM/WSSA Annual Meeting in Denver.



# **Welcome to the 2010 Annual Meeting Weed Science Society of America and the Society for Range Management**

## **Working Landscapes—Providing for the Future**

The 63rd Annual Meeting of the Society for Range Management and the 50th Annual Meeting for the Weed Science Society of America is a result of a strong partnership between WSSA and SRM. Many folks from both organizations volunteered substantial time to make it a rewarding experience for all who attend. The stage has been set for capitalizing in the future on our strengthened working relationship not only to each other but with other organizations as well.

You will see the results of our partnership in the program emphasis from the Plenary Day through the broad mix of technical programs and symposiums, and social activities, and in an atmosphere of working together.

Please take advantage of the many opportunities to advance your knowledge in technical areas, become acquainted with a broad spectrum of professionals, renew old friendships and enjoy the Mile High city of Denver, Colorado. We hope that you will use this occasion to form new friendships, expand your network and provide the basis for new and productive partnerships.

### General Co-Chairs

<b>John Jachetta</b>	<b>Roy Roath</b>
<b>Dale Shaner</b>	<b>Lana Pearson</b>
Weed Science Society of America	Society for Range Management



## **WORKING LANDSCAPES**

### **Providing for the Future**


**Dear SRM and WSSA Members and Friends,**


**On behalf of the Society for Range Management (SRM) and the Weed Science Society of America (WSSA), we extend an invitation to you to join us at the 2010 joint SRM-WSSA Annual Meeting in the Mile High city of Denver. We are excited to be sharing our 63<sup>rd</sup> (SRM) and 50<sup>th</sup> (WSSA) meeting with partners, colleagues, and friends.**

**This year's theme "Working Landscapes...Providing for the Future" is quite appropriate for the exchange of information concerning the multiple uses and products derived from our rich and diverse ecosystems. There will be many educational papers, posters, symposia, and workshops to attend as well as tours and social events. Not to be left out, Denver is an exciting city with a great diversity of activities available in addition to those already planned.**

**We would personally like to thank our joint Planning Committee for their years of hard work in developing the program, workshops, tours, and social events that are part of this annual meeting. Special thanks go to the leaders of the Planning Committee John Jachetta and Dale Shaner (WSSA), and Roy Roath and Lana Pearson (SRM) for their outstanding leadership and dedication to providing each of the meeting attendees a professional and educational experience.**

**Please take advantage of the many opportunities for professional development, meeting new friends and reacquainting with old friends, and expanding your networks with us in Denver. We look forward to seeing you this February.**

  
**Don Kirby, President**  
**Society for Range Management**

  
**David Shaw, President**  
**Weed Science Society of America**



## Travel to SRM/WSSA Annual Meeting, Denver, Colorado, February 7-11, 2010

**Airport -- Denver International Airport (DIA):** Air travel, car rental, and ground transportation may be arranged through New Horizons Travel, (Jill Burge – website <http://www.travelnewhorizons.com/>. Phone 970-223-7400 (970-225-0538 fax)).

If travelers arrange their own airfare then they can arrange for ground transportation or car rental at the airport. The Sheraton does not have its own shuttle service. Taxi service is about \$45/cab to the hotel.

SuperShuttle is offering discounted ground transportation for conference attendees from the airport to the hotel (\$19 one way per person and \$32 round trip per person). You may make reservations at <http://www.supershuttle.com/default.aspx?GC=LL54L> or call 1-800-BLUEVAN and give the code LL54L to the call taker. Give Sheraton Denver Downtown as your hotel. There are several Sheraton hotels in the Denver area. Insure you ask for Sheraton Denver Downtown Hotel, 1550 Court Place (Phone (303) 893-3333). Upon arrival at the Denver airport, pick up your luggage at Baggage Claim, Level 5 and report to the SuperShuttle Denver counter. They will issue tickets and give directions to the van loading area. Shuttles depart DIA every 15 minutes from 7 am to 5:15 pm. For other times call 800-BlueVan (800-258-3826) for reservations.

**Parking at the Hotel:** The Sheraton is providing attendees a \$10/day rate for their garage. This does not include in/out privileges. The entrance height to their garage is 6 ft, 7 inches high. They have only 5 oversized length spaces (vans or extended cab pickups) available. Standard Parking garage on 15th and Tremont (1 block from Hotel) has 1274 spaces at \$12/day without in/out privileges. Entrance height is 6 ft, 9 inches.

There are other parking garages and surface lots. Check website: ([www.experiencedowntowndenver.com/splashmap/tdm\\_splash\\_map/bin/tdm\\_splash\\_map.html](http://www.experiencedowntowndenver.com/splashmap/tdm_splash_map/bin/tdm_splash_map.html)) to determine other locations. Prices are listed at \$14-23/day. Most will not accommodate oversized vehicles. You can click the 'P' on the map which shows all parking locations along with a phone number that can be used to check the lot details. See map of hotel location on page \_\_\_\_.

Attendees driving from outside Denver in oversized vehicles including high clearance pickups or vans with trailers may take advantage of free parking at 4 Park-n-Ride locations.

From the:

North – 104th & Washington PnR, Route 7.

East – Montebello -- Peoria & Albrook) PnR, Route 44.

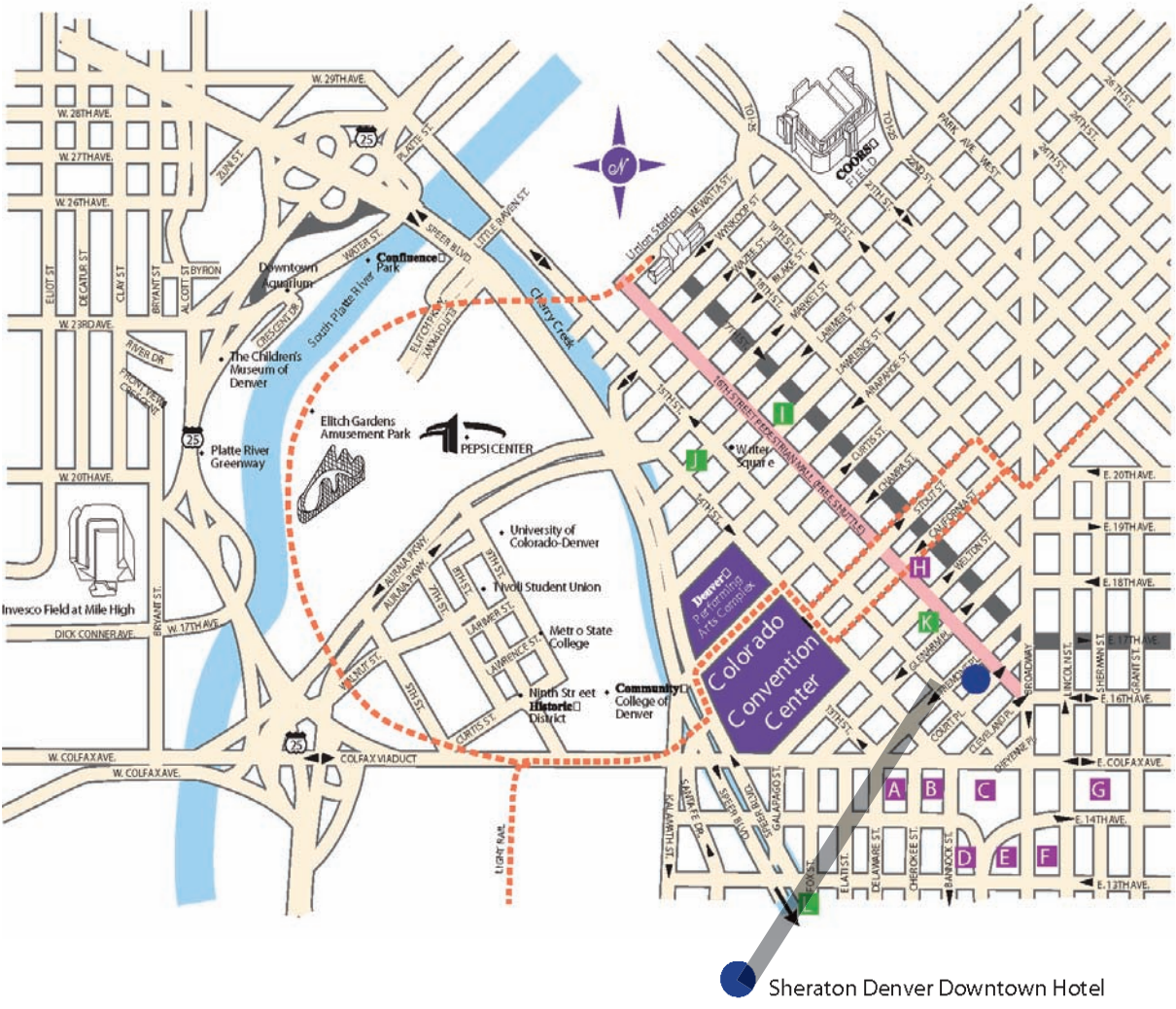
South – Englewood -- Floyd & Inca PnR, Route 12.

West -- Cold Spring -- 4th & Union, Route 16

The website for Park-n-Ride is: [www.rtd-denver.com](http://www.rtd-denver.com) .

Oversized student vans may take advantage of free parking at the SRM Headquarters, 10030 W. 27th Ave, Wheatridge, Co 80521 (25-30 vans) and take RTD bus Route 28 to downtown (\$2/trip). The bus stops at 26th and Kipling (one block away) and goes to 17th and Stout downtown (5 blocks from the hotel). It is advisable to check with the SRM headquarters at 303-986-3309 about parking there prior to arrival.

# Downtown Denver



# HOTEL ACCOMMODATIONS

With a couple of exceptions all activities of the SOCIETY FOR RANGE MANAGEMENT (SRM)/ WEED SCIENCE SOCIETY OF AMERICA (WSSA), 2010 Annual Meeting occurring February 04, 2010 - February 12, 2010 will be held within the Sheraton Denver Downtown Hotel, 1550 Court Place, Denver, Colorado.

A personalized Web site for attendees has been created for booking room reservations. Guests can access the site to learn more about the event and to book, modify, or cancel a reservation from August 31, 2009 to February 13, 2010.

To access the site and make a room reservation, copy and paste the following link into a web browser.

<http://www.starwoodmeeting.com/StarGroupsWeb/res?id=0908316354&key=7661E>

Room rates are as follows. These rates will apply three (3) days prior and three (3) days immediately following the actual meeting dates.

Room	Single Room	Double Rate	Triple Rate	Quad Rate
Deluxe Queen	\$124.00	\$124.00	\$134.00	\$134.00
Deluxe Double	\$124.00	\$124.00	\$134.00	\$134.00
Deluxe King	\$124.00	\$124.00	\$134.00	\$134.00
Concorde Double	\$144.00	\$144.00	\$159.00	\$159.00
Concorde King	\$144.00	\$144.00	\$159.00	\$159.00
Deluxe Room 1 Bed	\$124.00	\$124.00	\$134.00	\$134.00
Executive Suite 2 Queens	\$200.00	\$200.00	\$200.00	\$200.00
Presidential Suite	\$500.00	\$500.00	\$500.00	\$500.00
Tower Deluxe	\$300.00	\$300.00	\$300.00	\$300.00
Plaza Deluxe Suite	\$300.00	\$300.00	\$300.00	\$300.00
Accessible Queen	\$124.00	\$124.00	\$134.00	\$134.00
Accessible Double	\$124.00	\$124.00	\$134.00	\$134.00
King Bed of Suite	\$124.00	\$124.00	\$134.00	\$134.00
Queen Bed of Suite	\$124.00	\$124.00	\$134.00	\$134.00
Executive Suite with King	\$200.00	\$200.00	\$200.00	\$200.00

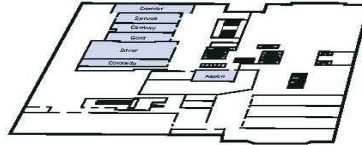
All rates are subject to applicable city and state taxes at the time of arrival: currently 14.85%.



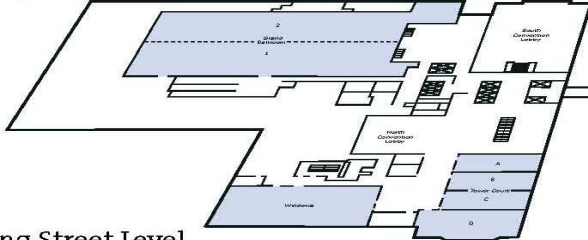


Sheraton Denver Hotel  
 1550 Court Place, Denver, Colorado 80202  
 T 303 893 3333 sheraton.com/denverhotel

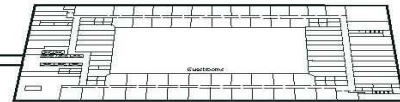
**Tower Building Mezzanine Level**



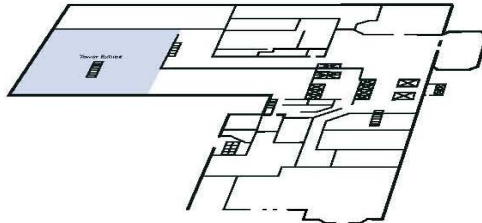
**Tower Building Second Level**



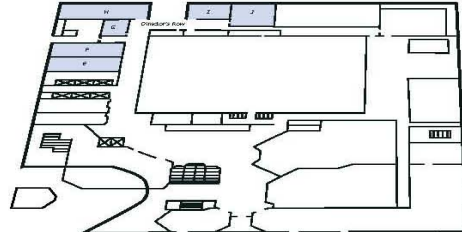
**Plaza Building Second Level**



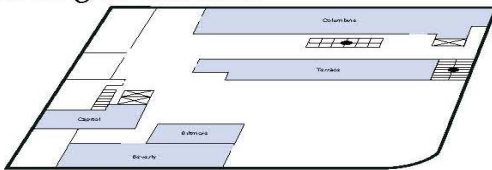
**Tower Building Street Level**



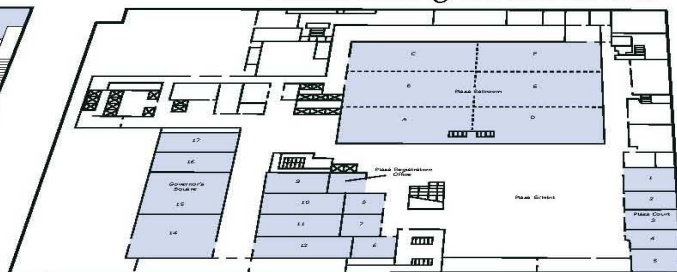
**Plaza Building Street Level**



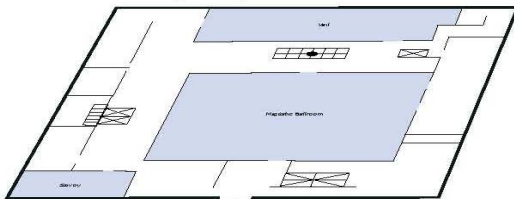
**Tower Building Terrace Level**



**Plaza Building Concourse Level**



**Tower Building Majestic Level**



BUILDING FLOOR	ROOMS
Tower Mezzanine	Denver Spruce Century Gold Silver Colorado Aspen Boardroom
Tower Second	Grand Ball Room 1 Grand Ball Room 2 Tower Court A Tower Court B Tower Court C Tower Court D Windows
Tower Terrace	Columbine Terrace Capital Biltmore Beverly
Tower Majestic	Majestic Ballroom Vail Savoy

BUILDING FLOOR	ROOMS
Plaza Street	Director's Row E Director's Row F Director's Row G Director's Row H Director's Row I Director's Row J
Plaza Concourse	Plaza Exhibit Plaza A Plaza B Plaza C Plaza D Plaza E Plaza F Plaza Court 1 Plaza Court 2 Plaza Court 3 Plaza Court 4 Plaza Court 5 Plaza Court 6 Plaza Court 7 Plaza Court 8 Governor's Square 9 Governor's Square 10 Governor's Square 11 Governor's Square 12 Governor's Square 14 Governor's Square 15 Governor's Square 16 Governor's Square 17

## 2010 REGISTRATION

SRM 63<sup>rd</sup> / WSSA 50<sup>th</sup> Annual Meeting & Trade Show, February 7 – 11, 2010, Denver, Colorado

Online: [www.rangelands.org/denver2010/](http://www.rangelands.org/denver2010/) ~ Fax: (303) 986-3892 ~ Mail: Society for Range Management, 10030 W. 27<sup>th</sup> Ave, Wheat Ridge, CO 80215

---

### GENERAL REGISTRATION INFORMATION

#### Society for Range Management

10030 W. 27<sup>th</sup> Avenue  
Wheat Ridge, CO 80215  
Phone: 303-986-3309  
Fax: 303-986-3892  
[www.rangelands.org](http://www.rangelands.org)



#### Weed Science Society of America

810 E. 10<sup>th</sup> Street  
Lawrence, KS 66044  
[www.wssa.net](http://www.wssa.net)

#### Meeting Location:

#### Sheraton Denver Downtown Hotel

1550 Court Place  
Denver, Colorado 80202  
Phone: (303) 893-3333

For reservations, visit <http://www.starwoodmeeting.com/StarGroupsWeb/res?id=0908316354&key=7661E>

For map & directions, visit <http://www.starwoodhotels.com/sheraton/property/area/map.html?propertyID=3205>

#### Registration Packages:

Full Registration (SRM Member, WSSA Member, SRM Emeritus Member, Non-Member): Includes admission to the Plenary Session and all symposia, Trade Show and Trade Show Welcome Mixer, Dance, Invasive Plant Species Mixer, and registration bag.

**Tours/meals are not included – registrants must purchase tours/meals separately.**

Student Registration (SRM Student Member, WSSA Student Member, Student Non-Member): Includes admission to the Plenary Session and all symposia, Trade Show and Trade Show Welcome Mixer, Dance, Invasive Plant Species Mixer, and registration bag.

**Tours/meals are not included – registrants must purchase tours/meals separately.**

Guest Registration: Includes admission to the Plenary Session and all symposia, Trade Show and Trade Show Welcome Mixer, Invasive Plant Species Mixer, and Dance. **Tours/meals are not included – registrants must purchase tours/meals separately.**

One Day Rate: Includes admission to programs for that day only, such as: Plenary Session and all symposia, Trade Show and Trade Show Welcome Mixer, Dance, Invasive Plant Species Mixer, and registration bag. **Tours/meals are not included – registrants must purchase tours/meals separately.**

#### Payment & Cancellation Policy:

No purchase orders accepted. Full payment is required at time of registration. Payments made by check should be made payable to “SRM ANNUAL MEETING”. Foreign checks must be cashier’s or certified check, in US Funds only, NO EXCEPTIONS.

IF YOU NEED ASSISTANCE PAYING FOR ITEMS WITH MORE THAN ONE CREDIT CARD, PLEASE CALL KAREN AT 303-986-3309. **YOU WILL BE CHARGED A \$50 PROCESSING FEE FOR ANY AND ALL CREDIT CARD CHANGES AFTER INITIAL REGISTRATION.**

Cancellations received IN WRITING by November 30, 2009 will receive a full refund less a \$50 processing fee. Cancellations received after November 30, 2009 will not be refunded.

## 2010 REGISTRATION

### SRM 63<sup>rd</sup> / WSSA 50<sup>th</sup> Annual Meeting & Trade Show, February 7 – 11, 2010, Denver, Colorado

Online: [www.rangelands.org/denver2010/](http://www.rangelands.org/denver2010/) ~ Fax: (303) 986-3892 ~ Mail: Society for Range Management, 10030 W. 27<sup>th</sup> Ave, Wheat Ridge, CO 80215

#### Contact Information – ALL INFORMATION IS REQUIRED

Name \_\_\_\_\_ Organization \_\_\_\_\_

Address \_\_\_\_\_

Daytime Phone \_\_\_\_\_ Email \_\_\_\_\_

Member Type:  SRM Regular Member  SRM Emeritus Member  SRM Life Member  SRM Apprentice Member  SRM Student Member  HSYF

SRM Family Member  SRM Institutional Member  SRM Commercial Member  WSSA Member  NON-MEMBER (member of neither SRM or WSSA)

#### Name Badge Information

#### Guest Badge Information

Name \_\_\_\_\_ Name \_\_\_\_\_

Title/Organization \_\_\_\_\_ Title/Organization \_\_\_\_\_

City/State \_\_\_\_\_ City/State \_\_\_\_\_

#### Registration Fees

	BEFORE DEC. 5	AFTER DEC. 5
SRM Member	\$260	\$310
WSSA Member	\$260	\$310
SRM Emeritus Member	\$120	\$170
SRM Student Member	\$80	\$130
WSSA Student Member	\$80	\$130
Student Non-Member	\$130	\$165
Non-Member - Other	\$350	\$410
Guest (available only with purchase of FULL registration)	\$80	\$130
One Day Rate (2 days max, circle days)    Mon    Tue    Wed    Thurs	\$125/day	\$125/day

SRM Affiliations:  Charter/Founding Member  Past President  Young Professionals Conclave  New Member (since 1/1/09)

Optional Events    (**see website regarding restrictions for United States Mint Tour)			Rate	Qty	Total
Sun. 2/7	9 a.m. – 5 p.m.	Tech Tour #1 – NE CO Grass Fed Beef (Lasater Ranch)	\$50	x	\$
Mon. 2/8	12 p.m.	SRM Past Presidents/Charter Members Luncheon	\$40	x	\$
Mon. 2/8	12:30 p.m. – 3 p.m.	Companion Tour #1 – Brown Palace Hotel	\$40	x	\$
Mon. 2/8	1:00 p.m.	WSSA 21st Century Workshop (Limited capacity)	n/c	x	\$ 0
Mon. 2/8	1:00 p.m.	Producer's Forum	\$15	x	\$
Tues. 2/9	8:30 OR 9:30 a.m.	(circle time) Companion Tour #2 – United States Mint **	n/c	x	\$ 0
Tues. 2/9	11:30 – 12:30	Young Professionals Luncheon	\$25	x	\$
Tues. 2/9	12:00 – 2:00 p.m.	Student Conclave Luncheon	Student \$15 Adult \$20	x	\$
Tues. 2/9	12 p.m. – 1:30 p.m.	WSSA Graduate Student Luncheon	n/c	x	\$ 0
Tues. 2/9	1:30 OR 2:30 p.m.	(circle time) Companion Tour #3 – Molly Brown House	\$15	x	\$
Tues. 2/9	2 p.m. – 6 p.m.	Student Conclave – Boulder Tour	\$10	x	\$
Wed. 2/10	8 a.m. – 12 p.m.	Tech Tour #2 – Boulder Open Space/Rocky Flats	\$25	x	\$
Wed. 2/10	8:30 OR 9:15 a.m.	(circle time) Companion Tour #4 – Colorado State Capital	n/c	x	\$ 0
Wed. 2/10	12:00 p.m.	SRM Business Mtg/Luncheon/Awards Ceremony	\$10	x	\$
Wed. 2/10	1:30 p.m.	Companion Tour #5 – Denver Art Museum	\$15	x	\$
Wed. 2/10	5:30 p.m.	WSSA Business Mtg and Reception	n/c	x	\$ 0
Wed. 2/10	7 p.m. – 9 p.m.	SRM Taste of Colorado Social <i>(*replaces SRM Banquet*)</i>	Adult \$35 Student \$25	x	\$
Thur. 2/11	8 a.m. – 4:30 p.m.	Open Space Symposium ( <i>must be full registrant for this rate</i> )	\$10	x	\$
Fri. 2/12	9:00 a.m. - 5:00 p.m.	Tech Tour #3 – Rocky Mountain National Park	\$50	x	\$

#### Ski Events

Fri. 2/5 OR Sat. 2/6 (circle night)	Overnight Ski at Breckenridge	(Own Transportation)	\$215	x	\$
Sat 2/6 OR Sun 2/7 (circle day)	7:00 a.m. – 4:00 p.m.	One Day Ski at Breckenridge	\$144	x	\$
Fri 2/13 OR Sat 2/14 (circle night)	Overnight Ski at Breckenridge	(Own Transportation)	\$227	x	\$

\*\*\*PAYMENT – ALL INFORMATION IS REQUIRED\*\*\*

TOTAL AMOUNT DUE:                    \$ \_\_\_\_\_

\_\_\_\_\_ Check enclosed (US Funds only. Foreign checks must be cashier's or certified check. Make checks payable to SRM Annual Meeting)

Credit Card number \_\_\_\_\_ Expire Date \_\_\_\_\_

Cardholder Name \_\_\_\_\_ Phone \_\_\_\_\_

Cardholder Email \_\_\_\_\_ Signature \_\_\_\_\_

# Silent Auction

The traditional Silent Auction sponsored by the Endowment Fund Board of Governors will be part of the events during the SRM Annual Meeting in February in Denver, Colorado. Because of the proximity of so many of SRM's members to the Denver area, the meeting and this auction, promises to be one of the biggest and best ever. Please help to make this important fund raiser for the Endowment Fund a success by contributing items for the auction and/or bidding on the items presented there. Look for the Silent Auction tables near the Trade Show. Questions about donating items can be directed to Rod Heitschmidt, (heitschmidt@att.net), Judith Dyess (jdyess@fs.fed.us), or Thomas Matza, (tmatza@fs.fed.us). Your participation by contributing or purchasing auction items is greatly appreciated. Thank you.

## THE SRM/WSSA TRADE SHOW

The Trade Show is a continuing and traditional highlight of the Annual Meeting. It is the place to see the latest in technical tools for resource management and to hear about the newest products from the various vendors. This year's Trade Show, in the spacious Plaza Exhibit Area, has the potential to be the largest in recent SRM Annual Meetings with space for over 70 exhibits.

### Trade Show Schedule

Sunday, February 8, 2009  
Noon -- 6 PM Booth Set-up

Monday, February 9, 2009  
8 AM --11 AM Booth Set-up  
Noon-- 8 PM Trade Show Open  
6 PM--8 PM Trade Show Mixer

Tuesday, February 10, 2009  
8 AM--8 PM Trade Show Open

Wednesday, February 11, 2009  
8 AM--Noon Trade Show Open  
Noon--6 PM Booth Tear Down

### Exhibitors can send their drayage to:

SRM. 2010  
c/o Coast to Coast Trade Shows  
3857 B Steele Street  
Denver, Colorado 80205

Please include:  
Company Name  
Booth Number  
Contact Name  
Contact Phone Number

For further information visit the SRM 2010 Website or contact Gary Frasier (gfrasier@aol.com) or Don Hajar (info@pawneebutteseed.com).

<b>SRM Committee Meetings</b>							
AT-A-GLANCE							
<b>Committee/Activity</b>	<b>Start</b>	<b>End</b>	<b>Location</b>	<b>Committee/Activity</b>	<b>Start</b>	<b>End</b>	<b>Location</b>
<b>Saturday February 6</b>				<b>Sunday February 7 (Continued)</b>			
SRM Board of Directors	7:00 AM	5:00 PM	Century	BLM Family Meeting & Reception	7:00 PM	10:00 PM	Governor's Square 14
2010 Planning Committee	1:30 PM	3:30 PM	Plaza Court 1	NRCS Family Meeting	7:00 PM	9:00 PM	Governor's Square 15
Registration	5:00 PM	7:00 PM	Plaza Registration Office	NPS Family Meeting	7:00 PM	10:00 PM	Governor's Square 12
SRM Board of Directors w/Chairs-Vice-Chairs	6:00 PM	8:00 PM	Tower Court D	<b>Monday February 8</b>			
				2010 Planning Committee	6:30 AM	7:00 AM	Plaza Court 1
<b>Sunday February 7</b>				Registration & Information	7:00 AM	5:30 PM	Plaza Registration Office
2010 Planning Committee	6:30 AM	7:30 AM	Plaza Court 1	2011 Annual Meeting Planning Committee	7:00 AM	9:00 AM	Plaza Court 7
Registration & Information	7:00 AM	5:30 PM	Plaza Registration Office	SRM Association of Range Consultants	7:00 AM	8:45 AM	
SRM Section Membership Chairs	8:00 AM	11:00 AM	Governor's Square 11	SRM Advisory Council	1:00 PM	4:30 PM	Windows
SRM Public Affairs	8:00 AM	12:00 PM	Governor's Square 15	SRM - CPRM Exam Review	1:00 PM	5:00 PM	Tower Court C
SRM Government Policy and Programs Committee	8:00 AM	12:00 PM	Governor's Square 14				
SRM Rangelands Steering Committee	8:00 AM	12:00 PM	Plaza Court 4	<b>Tuesday February 9</b>			
SRM Watershed/Riparian Committee	8:00 AM	12:00 PM	Plaza Court 5	2010 Planning Committee	6:30 AM	7:00 AM	Plaza Court 1
SRM Range Science Education Council	8:00 AM	12:30 PM	Governor's Square 9	Registration & Information	7:00 AM	5:30 PM	Plaza Registration Office
SRM Advisory Council	8:00 AM	4:30 PM	Governor's Square 12	SRM Board of Directors Meeting (Committee/Advisory Council Reports)	8:00 AM	10:00 PM	Governor's Square 9
SRM Nominations Committee	8:00 AM	5:00 PM	Colorado	SRM - CPRM Exam	8:00 AM	12:00 PM	Plaza Court 3
SRM RAM Committee	8:00 AM	5:00 PM	Spruce	Forest Service Rangeland Management Director's Meeting	8:00 AM	12:00 PM	Capital
Rangeland CEAP	9:00 AM	12:00 PM	Plaza Court 3	SRM Board of Director's Meeting Continuation	1:00 PM	5:00 PM	Windows
SRM Student Activities Committee	9:00 AM	2:00 PM	Columbine	SRM - Chicago Climate Exchange Verifier Review and Exam	1:00 PM	5:00 PM	Capital
SRM Finance Committee	9:00 AM	3:00 PM	Plaza Court 7	Association of University Rangeland Resource Programs	1:00 PM	3:00 PM	Plaza Court 1
SRM Coordinated Resource Management Committee	10:00 AM	12:00 PM	Tower Court D	US Forest Service Iweb Training	1:00 PM	4:00 PM	Terrace
SRM Information & Education Committee	12:00 PM	4:00 PM	Plaza Court 5	Northern Great Plains SRM Section Meeting	4:00 PM	6:00 PM	Plaza Court 7
Silent Auction set-up	12:00 PM	6:00 PM	Plaza Court 2	Cal Pac Section Meeting	6:00 PM	8:00 PM	Plaza Court 3
Tradeshow set up	12:00 PM	6:00 PM	Plaza Exhibit Area				
SRM Publications Committee	1:00 PM	3:00 PM	Tower Court B	<b>Wednesday February 10</b>			
SRM Accreditation Panel	1:00 PM	3:00 PM	Tower Court C	2010 Planning Committee	6:30 AM	7:00 AM	Plaza Court 1
SRM REM Editorial Board & Steering Committee	1:00 PM	3:00 PM	Governor's Square 9	Registration & Information	7:00 AM	12:00 PM	Plaza Registration Office
SRM Rangeland Invasive Species Committee	1:00 PM	4:00 PM	Gold	Board of Directors and Committee Chairs 2010, 2011 Planning Committees (others invited)	7:00 AM	8:00 AM	Vail
SRM Remote Sensing/GIS Committee	1:00 PM	4:00 PM	Windows	BLM Agency Workshop	8:00 AM	12:00 PM	Windows
SRM Wildlife Habitat Committee	1:00 PM	4:00 PM	Plaza Court 1	SRM Association of University Rangeland Resource Programs Committee	10:00 AM	12:00 PM	Plaza Court 5
SRM International Affairs Committee	1:00 PM	5:00 PM	Governor's Square 16	Tradeshow Tear Down	1:00 PM	6:00 PM	Plaza Exhibit Area
SRM (CPRM) Certified Professional Range Managers Committee	1:00 PM	5:00 PM	Silver	USDA - CSREES Project Director's Meeting	7:00 PM	9:00 PM	Plaza Court 5
SRM Rangelands Editorial Board	1:00 PM	5:00 PM	Plaza Court 4				
SRM Awards Committee	3:00 PM	5:00 PM	Tower Court C				
SRM Endowment Fund Board of Governors	3:00 PM	5:00 PM	Tower Court D	<b>Thursday February 11</b>			
SRM GLCI Task Force	3:00 PM	5:00 PM	Governor's Square 10	2010 Planning Committee	6:30 AM	8:30 AM	Plaza Court 1
SRM Membership Task Force	3:00 PM	5:00 PM	Tower Court B	2011 Meeting Planning Committee	7:30 AM	9:00 AM	Plaza Court 7
SRM History Archives & Library Committee	3:00 PM	5:00 PM	Plaza Court 7	Registration & Information	7:00 AM	10:30 PM	Plaza Registration Office
SRM Leadership Development Committee	4:00 PM	6:00 PM	Gold	SRM Board of Directors Meeting	12:30 PM	7:00 PM	Vail
Targeted Grazing Committee	5:00 PM	9:00 PM	Colorado	NRCS Technical meeting	1:00 PM	5:30 PM	Windows
SRM International Producer Program Hosted by Dow Chemical	5:00 PM	8:00 PM	Governor's Square 16				
Forest Service Award Ceremony and Family Meeting	6:00 PM	9:00 PM	Grand Ballroom - Section 1	<b>Friday February 12</b>			
Extension Family Meeting	6:00 PM	8:00 PM	Governor's Square 10	Joint WSSA/SRM Board of Directors Recap and Breakfast	7:00 AM	9:00 AM	Silver
USDA/ARS Scientists Meeting	6:00 PM	7:00 PM	Governor's Square 11	SRM Board of Directors	9:00 AM	5:00 PM	Century

<b>WSSA Committee Meetings</b>							
<b>AT-A-GLANCE</b>							
<b>Committee/Activity</b>	<b>Start</b>	<b>End</b>	<b>Location</b>	<b>Committee/Activity</b>	<b>Start</b>	<b>End</b>	<b>Location</b>
<b>Saturday February 6</b>				<b>Monday February 8 (Continued)</b>			
WSSA Board of Directors	7:30 AM	5:00 PM	Denver	WSSA Photo Contest Judging (W3J)	12:00 PM	3:00 PM	Tower Court B
2010 Planning Committee	1:30 PM	3:30 PM	Plaza Court 1	WSSA Poster Session Business Meeting	3:00 PM	3:30 PM	Plaza Ballroom DE
				WSSA Awards Ceremony	4:00 PM	6:00 PM	Grand Ballroom - Section 2
<b>Sunday February 7</b>				<b>Tuesday February 9</b>			
2010 Planning Committee	6:30 AM	7:30 AM	Plaza Court 1	NRI Awardees Reception	5:30 PM	7:30 PM	Governor's Square 10
WSSA Board of Directors	7:30 AM	5:00 PM	Denver	CSREES Funded Projects	6:00 PM	8:00 PM	Plaza Court 3
WSSA - Weed Science Editorial Board (P2)	9:00 AM	11:00 PM	Governor's Square 10				
WSSA Invasive Plant Science and Management Editorial Board (P4)	11:00 AM	1:00 PM	Governor's Square 10	2010 Planning Committee	6:30 AM	7:00 AM	Plaza Court 1
WSSA Extension Committee (W11)	1:00 PM	2:00 PM	Aspen	WSSA Herbicides For Minor Use Committee (E10)	7:00 AM	8:00 AM	Tower Court D
WSSA International Affairs (F8) 4M	1:00 PM	2:00 PM	Century	WSSA Herbicide Resistant Plants Committee (E12)	7:00 AM	9:00 AM	Plaza Court 4
WSSA Science Policy Committee (E2)	1:00 PM	2:00 PM	Plaza Court 3	WSSA Public Relations Steering (S65)	7:00 AM	9:00 AM	Savoy
WSSA Biological Control of Weeds Committee (W16)	1:00 PM	2:00 PM	Capital	WSSA Weed Loss Committee (E11)	7:00 AM	9:00 AM	Tower Court C
WSSA Professional Development Committee (S64)	1:00 PM	3:00 PM	Tower Court D	WSSA Website Committee (P23)	7:00 AM	8:00 AM	Plaza Court 3
WSSA Weed Technology Editorial Board (P2)	1:00 PM	3:00 PM	Governor's Square 10	WSSA Christian Fellowship Breakfast	7:00 AM	9:00 AM	Plaza Court 5
WSSA Formulation, Adjuvant and Application Committee (W15)	2:00 PM	3:00 PM	Plaza Court 3	WSSA Environmental Quality Committee (E8)	7:00 AM	8:00 AM	Governor's Square 9
Professional Development Training for WSSA Students - Monsanto	2:00 PM	6:00 PM	Terrace	WSSA Weed Alert Committee (W13)	7:30 AM	9:30 AM	Tower Court B
WSSA Endowment Fund Committee (F3)	3:00 PM	4:00 PM	Plaza Court 3	WSSA - NE-1026 Weed Mgt. Strategies for Sustainable Cropping Systems	8:00 AM	12:00 PM	Plaza Court 1
WSSA CD Reviews for Monday's papers	3:00 PM	4:00 PM	Plaza Court 8	WSSA CD Reviews for Wednesday's papers	3:00 PM	4:00 PM	Plaza Court 8
WSSA Federal Noxious and Invasive Weed Committee (E4)	3:00 PM	5:00 PM	Columbine	IWSS Board of Directors	6:00 PM	8:00 PM	Tower Court B
WSSA Parent Awards Committee (W3)	3:00 PM	5:00 PM	Century				
WSSA Biology of Weeds Committee (W4)	3:00 PM	5:00 PM	Aspen	<b>Wednesday February 10</b>			
				2010 Planning Committee	6:30 AM	7:00 AM	Plaza Court 1
<b>Monday February 8</b>				WSSA President's Breakfast w/ Regional Presidents	7:00 AM	8:30 AM	Terrace
2010 Planning Committee	6:30 AM	7:00 AM	Plaza Court 1	WSSA Finance Committee (F2) 4C	7:00 AM	9:00 AM	Plaza Court 3
WSSA Foundation Committee	7:00 AM	9:00 AM	Plaza Court 3	WSSA Terminology Parent Committee (P22)	7:00 AM	8:00 AM	Plaza Court 4
WSSA Herbicide Resistance Action Committee (HRAC)	7:00 AM	9:00 AM	Plaza Court 4	WSSA History and Archive Committee (W8)	7:00 AM	8:00 AM	Tower Court B
WSSA Education Committee (W5)	7:00 AM	9:00 AM	Plaza Court 5	WSSA CD Reviews for Thursday's papers	3:00 PM	4:00 PM	Plaza Court 8
WSSA Publication Board	7:00 AM	9:00 AM	Capital	WSSA Business Meeting	5:30 PM	6:30 PM	Terrace
WSSA 2010/2011 Program Committee (W1)	7:00 AM	9:00 AM	Denver	WSSA Reception hosted by Syngenta Crop Protection	6:30 PM	9:30 PM	Majestic Ballroom
WSSA Sustaining Member Committee (F5)	7:00 AM	8:00 AM	Tower Court D				
WSSA Standardized Plant Names Committee (P22B)	7:00 AM	8:00 AM	Tower Court B	<b>Thursday February 11</b>			
WSSA Integrated Weed Management Committee (W17)	7:00 AM	9:00 AM	Savoy	2010 Planning Committee	6:30 AM	8:30 AM	Plaza Court 1
WSSA Membership & Affiliations Committee (F4)	7:00 AM	8:00 AM	Tower Court C	WSSA President's Breakfast with Committee Chairs	7:00 AM	8:30 PM	Plaza Court 4
WSSA Fellows & Honorary Member committee (W3a)	8:00 AM	9:00 AM	Tower Court C				
WSSA CAST Committee (E3)	8:00 AM	9:00 AM	Governor's Square 10	<b>Friday February 12</b>			
WSSA Sustaining Agriculture Committee (W20)	8:00 AM	9:00 AM	Tower Court D	Joint WSSA/SRM Board of Directors Recap and Breakfast	7:00 AM	9:00 AM	Silver
WSSA Research and Competitive Grants Committee (E6)	8:00 AM	9:00 AM	Tower Court B	WSSA Board of Directors	9:00 AM	3:30 PM	Denver
WSSA CD Reviews for Tuesday's papers	8:00 AM	6:00 PM	Plaza Court 8				

## **Technical Tours**

### **Tech Tour #1 -- NE CO Grass Fed Beef (Lasater Ranch)**

**Sunday, February 7, 2010**

**Depart – 9:00AM, Return – 5:00PM**

**Lunch Provided**

**Fee - \$50.00**

Travel to the ranch through scenic country from the low mountains and foothills to the plains. This is a large ranch where cattle are raised as nature intended – free range, grassfed, with no confinement, no grain, no growth hormones, no antibiotics, no pesticides and no commercial fertilizers. The only supplement that may be provided when winter snows are severe is a little organically grown hay. The Lasater Ranch is the largest individual “Grassfed” producer in the state and probably the nation. The ranch developed their own sustainable breed of cattle using practical selection criteria and lives in harmony with nature, viewing “nature as a partner rather than a force to be overcome.” The Lasater Ranch uses a holistic approach and implements intensive rotational grazing. Ranch owner Dale Lasater and ranch manager Andy Duffy will discuss the benefits of sustainable rangelands through grassfed beef production. After lunch there will be a field tour (weather permitting), so dress warmly. (minimum of 30 participants, deadline Jan. 5)

### **Tech Tour #2 -- Boulder Open Space/Rocky Flats**

**Wednesday, February 10, 2010**

**Depart – 8:00AM, Return 12:00 noon**

**Fee - \$25.00**

This tour will take place along the foothills northwest of the Denver metro area. Tour participants will view / discuss geology and plant community ecology with local ecologist David Buckner. Mr. Buckner will speak about the unique plant communities found in the area, and how local ecological processes have shaped these communities. Other topics of interest may include the Rocky Flats National Wildlife Refuge, local open space organizations and the National Renewable Energy Lab in Golden. (minimum of 30 participants, deadline Jan. 5)

### **Tech Tour #3 Rocky Mountain National Park**

**Friday, February 12, 2010**

**Depart – 9:00AM, Return 5:00PM**

**Lunch Provided**

**Fee \$50.00**

Travel to one of the most visited national parks in the nation. See wildlife and learn about wildlife over use and damage to the vegetation especially in the riparian areas. Learn about efforts to improve the situation and learn about reclamation including collection and increase of local native plants in the park. Park Ecologist Jeff Connor will lead the discussion. Dress Warmly. (minimum of 30 participants, deadline Jan. 5)

# Social Activities

## TOURS:

The mile-high city of Denver provides us with a unique opportunity to host several companion tours within walking distance of the hotel. There will be a companion tour table located in the main lobby of the hotel. All tours will depart from the main lobby 30 minutes prior to the tour with the exception of the State Capitol tour which will depart 45 minutes prior to the tour for security clearance purposes.

**Brown Palace Hotel Tour and Tea**  
**Monday, February 8, 2010**  
**1:00 pm to 3:00 pm**

Enjoy an afternoon tour and high tea at the 117 year old historic Brown Palace Hotel. In the late 1800s in Denver, people from all over the country were flocking to the West seeking their fortunes in gold and silver. Everyone stopped in Denver on their way to or from the mountains. Some settled; some moved on, but all needed a place to stay. Henry Cordes Brown, a carpenter-turned-real-estate entrepreneur began construction on The Brown Palace Hotel in 1888. After an expenditure of \$1.6 million - a remarkable sum for the time - and another \$400,000 for furniture, The Brown Palace Hotel opened on Aug. 12, 1892. It had 400 guest rooms (compared to 241 today) that rented for between \$3 and \$5 a night. Every U.S. president has visited The Brown Palace since Teddy Roosevelt (1905), with the exception of Calvin Coolidge. Following the tour, enjoy high tea with scones, tea pastries and tea sandwiches that are artfully prepared by the hotel's culinary staff each day and Devonshire cream shipped directly from England. [www.brownpalace.com](http://www.brownpalace.com)

**United States Mint at Denver**  
**Tuesday, February 9, 2010**  
**8:30 am and 9:30 am**

The United States Mint in Denver is the nation's second largest storehouse of gold bullion. Touring the United States Mint is a fascinating experience for people of all ages and one that will be remembered for a lifetime. Tours cover both the present state of coin manufacturing as well as the history of the Mint. Learn about the craftsmanship required at all stages of the minting process, from the original designs and sculptures to the actual striking of the coins. Located directly adjacent to the visitor's entrance, the gift shop has United States Mint coin sets, commemorative coins, numismatic collectables, books, games, and United States Mint souvenirs. You are welcome to visit the gift shop after your tour. See the website regarding tour restrictions. [www.usmint.gov/mint\\_tours/](http://www.usmint.gov/mint_tours/)

**Molly Brown House Museum**  
**Tuesday, February 9, 2010**  
**1:30 pm and 2:30 pm**

The Molly Brown House Museum is a house located at 1340 Pennsylvania Street in Denver. It was the home of American philanthropist, socialite, and activist Margaret Brown. Brown known as "The Unsinkable Molly Brown" because she survived the sinking of the Titanic. The museum, located in her former home presents exhibits interpreting the life of high society in Victorian Denver as well as architectural preservation. The tour through this unique home will take approximately 45 minutes.

The house was built in the 1880s by architect William A. Lang, incorporating several popular styles of the period. In 1902, it was the governor's mansion for the Governor of Colorado and his family (Mollie invited the governor and his family to use her home while the governor's mansion was undergoing remodeling). In the 1970's a group of concerned citizens formed Historic Denver, Inc. raising the funds for the house to be restored to its former glory. In restoration, the group used architectural research, paintchip analysis, and original photographs taken in 1910 as guides to reconstructing it. A shuttle will be provided from the hotel to the Molly Brown House. [www.mollybrown.org/](http://www.mollybrown.org/)



**Colorado State Capitol Tour**  
**Wednesday, February 10, 2010**  
**8:30 am and 9:15 am**

The 13th step on the west side of the State Capitol is exactly 5,280 feet above sea level – one mile high. Modeled after the U.S. Capitol, the building is known for its brilliant dome, which is covered with 200 ounces of 24K gold. The tour of the capitol building highlights : early Colorado history, Capitol construction, the lawmaking process, several stained glass windows, Women's Gold Tapestry, presidential portraits and a stop outside the Senate and House of Representatives' chambers. The final stop on the tour is a climb up 99 steps to the gold dome. The distinctive gold dome consists of real gold plate, first added in 1908, commemorating the Colorado Gold Rush. From the top of the dome, you will be able to see a great view of downtown Denver. The tour lasts approximately 1 ½ hours. [www.state.co.us/gov\\_dir/leg\\_dir/lcsstaff/Scrollpages/TourScroll.htm](http://www.state.co.us/gov_dir/leg_dir/lcsstaff/Scrollpages/TourScroll.htm)

**Denver Art Museum**  
**Wednesday, February 10, 2010**  
**1:30 pm**

Visit Denver's newest landmark. The Denver Art Museum's Hamilton Building is an architectural work of art. Explore the Museum's galleries showcasing a world-famous Native American Indian art, Western American art and from around the world. Following the 45 minute tour, you will have time to explore the museum on your own, viewing more than 60,000 works of art. [www.denverartmuseum.org](http://www.denverartmuseum.org)

## **Shopping:**

### **16th Street Mall:**

The 16th Street Mall is Denver's hub for shopping, dining and entertainment that stretches for 16 blocks in the heart of downtown. An environmentally friendly free shuttle stops at every intersection to transport shoppers to more than a mile of Denver's best restaurants and shops. The 16th Street Mall recently became a wireless internet hot spot; visitors can log on for free anywhere along the Mall or Skyline Park.

Locals and visitors alike enjoy strolling the Mall's wide, pedestrian friendly sidewalks to people watch and visit with friends. Since no cars are allowed on the Mall, navigating on foot or with the free shuttles is easy. Street vendors and performers add to the exciting atmosphere.

The mall is home to many popular shops, including Virgin Records Megastore, Niketown and Gap. The Mall's restaurants, including Maggiano's Little Italy, Hard Rock Cafe and Rock Bottom Brewery, are all excellent places to take a break from a hard day of shopping. Several smaller cafes can also be found along the street, including Paradise Bakery, Suzy Q's Deli & Frozen Yogurt and Good Times. For a unique outdoor shopping experience, 16th Street Mall is the perfect choice while visiting Denver.

The Sheraton Denver Hotel, the host hotel for the WSSA/SRM meeting, is also located on the 16th Street Mall. The shuttle bus stop is across the street from the hotel and provides access to the entire mall. The following link provides information on restaurants and shopping available on the mall. [www.downtowndenver.com/BID/BID16thStreetMall.htm](http://www.downtowndenver.com/BID/BID16thStreetMall.htm)

# WSSA Social and Student Events

**WSSA Graduate Student Luncheon:** This event is a combination luncheon and business meeting for the WSSA graduate students in attendance at the annual meeting. A buffet style lunch will be served and Jason Weirich, Graduate Student Organization representative to the WSSA Board of Directors, will conduct the business meeting. There is no fee for the luncheon. We do ask that individuals indicate on the registration form if they plan to attend so we can make appropriate arrangements for food.

**WSSA Wednesday Night Reception:** This is the traditional Wednesday night WSSA reception. Hors d'oeuvres with carving stations and mini desserts will be served. Cash bar. There are no fees for this reception. We do ask that individuals indicate on the registration form if they plan to attend so we can make appropriate arrangements or food. Co-Sponsored by Syngenta Crop Protection and the WSSA.

## **Professional Development Workshop for WSSA Students Sponsored by Monsanto:**

Monsanto will conduct a Professional Development workshop on Sunday, 7 February from 2:00 – 6:00 pm for students during the WSSA annual meeting in Denver. The workshop will focus on self understanding, core issues that affect teams, and the effect of personal preferences in a team environment.

Participants will take the Myers-Briggs Type Indicator (MBTI) online prior to the workshop. The MBTI is a self report questionnaire designed to inform individuals about their motivations, strengths, and areas for personal growth. The workshop will help participants understand the different personality types and develop a better appreciation of people who differ from them.

Teamwork and other organizational skills are critical to the success of most organizations and companies today. The workshop will cover the important issues of communications, team culture, leadership, change, problem solving/conflict resolution, and stress and will explore the relationship between critical team issues and personal preferences.

The workshop, conducted by Monsanto experts in talent development, will be highly interactive, and some team building exercises will be conducted with the help of the MBTI in order to allow reflection on the subjects of team building and team success.

### **Enrollment:**

Attendance to the workshop will be limited to 40 students. The workshop is open to WSSA students at no cost. The workshop will take four hours, including introduction, breaks, and some practical exercises.

The results of the MBTI test will be provided to participants during the workshop, with an explanation of the test results by the experts.

All personal information will be kept confidential and participants will receive the only copy of the results available. This is a training instrument, and Monsanto and WSSA are not interested in the results.

### **How to Apply**

Send your name, school name, mailing address, email address, telephone, and academic status (i.e. M.S candidate, Ph.D. candidate) to Jason Weirich at [JWeirich@GRI.MsState.Edu](mailto:JWeirich@GRI.MsState.Edu)

The deadline for application is 1st December.

Tours and Social Events							
AT-A-GLANCE							
Committee/Activity	Start	End	Location	Committee/Activity	Start	End	Location
<b>Sunday February 7</b>				<b>Tuesday February 9 (Continued)</b>			
Christian Fellowship for Rangeland Stewardship	6:30 AM	7:00 AM	Plaza Court 7	Idaho Social - University of Idaho and Idaho SRM	6:00 PM	8:00 PM	Denver
Technical Tour #1-Lasater Ranch	9:00 AM	5:00 PM	Off Site	Montana State University Alumni Social	6:00 PM	8:00 PM	Governor's Square 9
Silent Auction set-up	12:00 PM	6:00 PM	Plaza Court 2	Oregon State University Alumni Social	6:00 PM	8:00 PM	Tower Court D
Tradeshow set up	12:00 PM	6:00 PM	Plaza Exhibit Area	Texas A&M University Alumni Social	6:00 PM	8:00 PM	Tower Court C
				Oklahoma State University Alumni	6:00 PM	8:00 PM	Plaza Court 4
				Wildland Resources Department, Utah State University	6:00 PM	8:00 PM	Windows
<b>Monday February 8</b>							
Christian Fellowship for Rangeland Stewardship	6:30 AM	7:00 AM	Plaza Court 5	Invasive Plant Symposium Mixer - Poster Sessions	6:00 PM	8:00 PM	Plaza Ballroom DE
Silent Auction	8:00 AM	8:00 PM	Plaza Court 2	CSU/Colorado Section Gathering	7:00 PM	9:00 PM	Terrace
Tradeshow Set-Up	8:00 AM	11:00 AM	Plaza Exhibit Area	Dance	8:00 PM	12:00 AM	Majestic Ballroom
SRM Past Presidents, Founding & Charter Member Luncheon	12:00 PM	2:00 PM	Governor's Square 10				
Tradeshow	12:00 PM	8:00 PM	Plaza Exhibit Area	<b>Wednesday February 10</b>			
Companion Tour #1 -Brown Palace	1:00 PM	3:00 PM	Off Site	Technical Tour #2-Rocky Flat	8:00 AM	12:00 PM	Off Site
SRM/WSSA Trade Show Mixer	6:00 PM	8:00 PM	Plaza Exhibit Area	Silent Auction	8:00 AM	12:00 AM	Plaza Court 2
President's and VIP Reception	7:30 PM	9:00 PM	Off Site	Trade Show	8:00 AM	12:00 AM	Plaza Exhibit Area
				Companion Tour #4- State Capitol	08:30 or 09:15AM		Off Site
<b>Tuesday February 9</b>				SRM Business Luncheon & Meeting			
Texas Tech Alumni Breakfast	6:30 AM	8:30 AM	Denver	Companion Tour #5- Denver Art	01:30PM		Off Site
New Members Breakfast	7:00 AM	8:00 AM	Plaza Ballroom F	SRM Student Awards	2:45 PM	4:00 PM	Plaza Ballrooms ABC
Silent Auction	8:00 AM	6:00 PM	Plaza Court 2	SRM Honor Awards	2:45 PM	6:30 PM	Plaza Ballrooms ABC
Tradeshow	8:00 AM	8:00 PM	Plaza Exhibit Area	Wild Women of Range	4:30 PM	7:00 PM	off site to CCC foyer
Companion Tour #2- U.S. Mint	8:30 or 09:30AM		Off Site	Taste of Colorado	7:00 PM	9:00 PM	off site
Companion Tour #3- Molly Brown	01:30 or 02:30PM		Off Site				
DuPont Crop Protection Reception	5:00 PM	7:00 PM	Plaza Ballroom F	<b>Friday February 12</b>			
University of Arizona Alumni and Friends	5:30 PM	7:30 PM	Capital	Technical Tour#3- Rocky Mtn Park	8:00 AM	5:00 PM	Off Site
University of Wyoming	6:00 PM	8:00 PM	Grand Ballroom - Section 2				

# SRM/WSSA Student Activities

Student events and activities provide a great opportunity for high school and college students to become involved with the SRM and WSSA and to learn more about rangeland resources and the field of rangeland science. The various events and activities are designed to: 1) provide a forum for students to test their knowledge of rangeland ecology, plant identification and rangeland management; 2) provide a format that encourages syntheses of information and enhancement of communication skills; 3) create an atmosphere that fosters camaraderie, friendships and lasting relationships; 4) give students the opportunity to meet SRM members; 5) allow students to interact with rangeland professionals and explore career opportunities; 6) provide insights concerning the functioning and working of the Society; and 7) provide an opportunity to learn about the ecology and natural resources of the annual meeting location. We encourage SRM and WSSA members to attend the various student events and activities. Exceptional presentations can be heard and reviewed at the High School Youth Forum oral presentation session, Undergraduate Technical Paper Presentations, the Rangeland Cup poster competition, Undergraduate Public Speaking Contest, and the Graduate Student Paper & Poster presentations. Please check the Student Activities Schedule for the time and location of the various events and activities. Remember, our students represent the future of SRM and WSSA!

## High School Youth Forum (HSYF) Activities:

### SRM Section Youth Activities Workshop

We are pleased to announce a new youth workshop that will be held during the 2010 SRM Meeting in Denver. This workshop is intended to help section contacts learn from the successes and failures of other section youth outreach efforts, and more rapidly improve youth outreach in their own SRM Section. The workshop is scheduled to take place on Sunday evening, February 7th, from 5:30 to 7:00 PM. It will precede the opening orientation session of the HSYF and will be held in the same meeting room. Several sections have not had any HSYF representation for several years. There also appears to be a decline in the number of youth range camps that are being held, and the attendance has become stagnant in some regions. We hope this workshop will stimulate coordinated efforts to find solutions to some of these issues.

### HSYF Orientation & Social

A social to get acquainted with other students participating in the HSYF from all over the western U.S. and Canada. Don't miss this kick off event on Sunday evening, February 7.

### HSYF Field Tour

On Monday, February 8, Youth Forum participants will tour the rangelands of the eastern foothills of the Rocky Mountains region; observe prescribed grazing management, riparian improvements & the cultural significance of a historic ranch located southeast of the Denver area; visit Castlewood Canyon State Park to learn more about the unique geology & history of the Cherry Creek settlement area; and tour a grass-fed bison ranching enterprise to learn about the history of bison and the production & marketing benefits of grass-fed bison. The "bison store" at the ranch headquarters will be available for the students to visit before departing back to downtown Denver.

### HSYF Professional Interaction Dinner

Monday evening, HSYF students have the chance to meet and visit with natural resource professionals in a relaxed dining atmosphere. Find out about career opportunities and begin to develop your professional network.

### HSYF Paper Presentations

On Tuesday February 9, each HSYF participant will present a 6-8 minute presentation on a rangeland/grassland topic of their choice. The presentations will be judged, with the winner being invited to attend the 2011 Annual Meeting. Presenters remember to bring visual aides to illustrate your discussion and be prepared to answer questions from the judges. All SRM members and guests are invited to attend these presentations. A practice room will be provided. HSYF students attend the Student Conclave Luncheon on the presentation day.

### HSYF Business Meeting

On Wednesday February 10, students attend this meeting to plan next year's HSYF activities and elect the 2009 HSYF officers.

### HSYF Workshop

A workshop developed by the HSYF Subcommittee to help students develop skills to enhance their future as rangeland professionals.

## SRM/WSSA Student Activities (Continued)

### **Student Conclave Business Meeting & Mixer**

All SRM student members are part of the Student Conclave and invited to participate in Conclave activities. This event will be held on Sunday February 7.

### **Student Conclave Boulder Tour:**

This tour will take place along the foothills west of the Denver metro area. Tour participants will view / discuss geology and plant community ecology with local ecologist David Buckner. Mr. Buckner will speak about the unique plant communities found in the area, and how local ecological processes have shaped these communities. Students will also get a chance to view / discuss the protection and stewardship of open space lands with representatives from the City of Boulder and Boulder County. This tour will be an excellent opportunity to discuss natural resource management issues at the urban / wildland interface.

### **Undergraduate Range Management Exam (URME)**

On Monday February 8, SRM undergraduate teams will compete to test their knowledge and understanding of range management and ecology. The top 5 scoring individuals and top 5 teams will be recognized at the Awards Ceremony.

### **Undergraduate Public Speaking Contest**

On Monday afternoon, undergraduates can compete in an extemporaneous public speaking contest. Each student will select one of 3 provided speech topics related to range management. They will have 2.5 hours to develop a 5-7 minute presentation of that topic. Students can use any resources available at the SRM meeting to develop their speech, including people, displays and presentations. Everyone is invited to attend these presentations.

### **Tapping the Top, A Meeting Place for Students & Professionals**

This annual SRM event provides an opportunity for college students (undergraduate & graduate), to interact with professionals in a social atmosphere, hear about their career experiences, and learn about hiring opportunities. The scope of professionals who participate include academic/research, agency (federal, state, military), and the private sector including ranchers, consultants and weed scientists. This year, **a warm invitation is extended to the students and weed science professionals engaged with the WSSA to participate in the TAPPING THE TOP MIXER.** It will be held Monday, February 8, from 5:00 to 6:30 pm. Although the WSSA awards reception is scheduled to last until 6:00pm, WSSA students and weed science professionals are welcome to attend the latter half of the mixer until 6:30pm.

### **Student Chapter Display Contest**

Student SRM Chapters will display their exhibits as part of the Trade Show. Awards will be presented for the best display at the Awards Ceremony.

### **Plant ID Contest**

This is a time-honored tradition of SRM. On Tuesday February 9, students will test their skills by identifying plants from a list of 200 important range plants. Awards will be given to top teams and the top individuals.

### **Undergraduate Technical Paper Session**

Undergraduate students give oral presentations on research projects or papers to the SRM membership. Everyone at the Annual Meeting is invited to attend these presentations on Wednesday morning.

### **Rangeland Cup**

This SRM competition involves a team approach to problem solving, designed to promote critical thinking and cooperative, collaborative work on topics relevant to rangeland science and management. Teams present their solutions during the Monday afternoon poster session. Everyone is invited to view the posters and discuss the projects with team members.

### **Graduate Student Paper and Poster Competitions**

The SRM Graduate Student Paper and Poster Competitions offer graduate students the opportunity to compete in the presentation of their research in technical paper and poster sessions throughout the week. The four categories are M.S. Oral, M.S. Poster, Ph.D. Oral and Ph.D. poster. First and second prizes will be awarded in each category.

<b>Student and Young Professional Activities</b>							
<b>AT-A-GLANCE</b>							
<b>Committee/Activity</b>	<b>Start</b>	<b>End</b>	<b>Location</b>	<b>Committee/Activity</b>	<b>Start</b>	<b>End</b>	<b>Location</b>
<b>Sunday February 7</b>				<b>Tuesday February 9</b>			
SRM High School Youth Home Room	6:00 AM	11:00 PM	Tower Court A	SRM High School Youth Home Room	6:00 AM	11:00 PM	Tower Court A
Employment Interview Room - BLM	7:00 AM	10:00 PM	Director's Row H and E	SRM Plant ID Staging/Coaches Workshop	6:00 AM	1:00 PM	Vail
Employment Interview Room - FS	7:00 AM	10:00 PM	Director's Row I and J	SRM High School Youth Forum	7:00 AM	5:00 PM	Governor's Square 10
Employment Interview Room - other	7:00 AM	10:00 PM	Governor's Square 17	Employment Interview Room - BLM	7:00 AM	10:00 PM	Director's Row H and E
Employment Interview Room - NRCS	7:00 AM	10:00 PM	Director's Row F	Employment Interview Room - FS	7:00 AM	10:00 PM	Director's Row I and J
Human Resources Room	7:00 AM	10:00 PM	Director's Row G	Employment Interview Room - other	7:00 AM	10:00 PM	Aspen
Career Opportunities Room (includes WSSA Placement Service information and interviews)	8:00 AM	10:00 PM	plaza/governor foyer	Employment Interview Room - NRCS	7:00 AM	10:00 PM	Director's Row F
Job fair set up	8:00 AM	10:00 AM	Majestic Ballroom	Human Resources Room	7:00 AM	10:00 PM	Director's Row G
Job Fair Business Center - Student Speaker Prep Room	10:00 AM	6:00 PM	Biltmore	Career Opportunities Room (includes WSSA Placement Service information and	8:00 AM	10:00 PM	plaza/governor foyer
2010 Job Fair	10:00 AM	6:00 PM	Majestic Ballroom	Student Exhibits	8:00 AM	6:00 PM	Plaza Exhibit Area
SRM Student Plant ID Study Room - Plant Exchange	12:00 AM	11:59 PM	Beverly	SRM Plant ID Contest/Viewing	8:00 AM	3:00 PM	Majestic Ballroom
Rangeland Career Development Workshop	1:00 PM	5:00 PM	Vail	Job Fair Business Center and Student Prep	10:00 AM	6:00 PM	Biltmore
SRM Student Conclave Business Meeting & Mixer	5:00 PM	8:00 PM	Grand Ballroom - Section 2	Young Professional Conclave Luncheon	11:30 AM	12:30 PM	Grand Ballroom - Section 2
SRM Contestants Registration	5:00 PM	6:00 PM	Grand Ballroom - Section 2	SRM Student Conclave Lunch & Meeting	12:00 PM	2:00 PM	Plaza Ballroom F
SRM Young Professionals Conclave	5:00 PM	7:00 PM	Governor's Square 9	WSSA Graduate Student Luncheon and Business Meeting	12:00 AM	1:30 PM	Denver
SRM Youth Activities Workshop	5:30 PM	7:00 PM	Tower Court A	SRM Student Plant ID Study Room	12:00 AM	11:59 PM	Beverly
Professional WSSA Students - Monsanto	6:00 PM	11:00 PM	Terrace	Rangeland Cup	1:00 PM	5:00 PM	Plaza Ballroom DE
SRM High School Youth Orientation/Social	7:00 PM	10:00 PM	Tower Court A	SRM Plant ID Contest Grading	1:00 PM	7:00 PM	Savoy
				Student Conclave Tour	2:30 PM	6:00 PM	off site
<b>Monday February 8</b>				SRM Plant ID Coaches critique	6:00 PM	7:00 PM	Vail
SRM High School Youth Home Room	6:00 AM	11:00 PM	Tower Court A	<b>Wednesday February 10</b>			
Employment Interview Room - BLM	7:00 AM	10:00 PM	Director's Row H and E	SRM High School Youth Business Mtg & Workshop	6:00 AM	11:59 PM	Tower Court A
Employment Interview Room - FS	7:00 AM	10:00 PM	Director's Row I and J	Employment Interview Room - BLM	7:00 AM	10:00 PM	Director's Row H and E
Employment Interview Room - other	7:00 AM	10:00 PM	Aspen	Employment Interview Room - FS	7:00 AM	10:00 PM	Director's Row I and J
Employment Interview Room - NRCS	7:00 AM	10:00 PM	Director's Row F	Employment Interview Room - other	7:00 AM	10:00 PM	Aspen
Human Resources Room	7:00 AM	10:00 PM	Director's Row G	Employment Interview Room - NRCS	7:00 AM	10:00 PM	Director's Row F
SRM Undergraduate Range Management Exam	7:00 AM	12:00 PM	Majestic Ballroom	Human Resources Room	7:00 AM	10:00 PM	Director's Row G
SRM High School Youth Forum Tour	8:00 AM	4:30 PM	off site	Student Exhibits	8:00 AM	12:00 AM	Plaza Exhibit Area
SRM UG Public Speaking Contest Reg. Room	8:00 AM	5:00 PM	Biltmore	Special Session - SRM Undergraduate Student Contributed (Technical) Papers	8:00 AM	12:00 PM	Spruce
Career Opportunities Room (includes WSSA Placement Service information and interviews)	8:00 AM	10:00 PM	plaza/governor foyer	Career Opportunities Room (includes WSSA Placement Service information and	8:00 AM	10:00 PM	plaza/governor foyer
Student Exhibits Set-Up	8:00 AM	6:00 PM	Plaza Exhibit Area	SRM Student Plant ID Study Room	12:00 AM	10:00 PM	Beverly
Job Fair Business Center and Student Prep	10:00 AM	6:00 PM	Biltmore				
SRM Student Plant ID Study Room	12:00 AM	11:59 PM	Beverly	<b>Thursday February 11</b>			
SRM UG Public Speaking Contest Room A and B	1:00 PM	5:00 PM	Terrace and Capital	Career Opportunities Room (includes WSSA Placement Service information and	8:00 AM	12:00 PM	plaza/governor foyer
SRM URME Grading	2:00 PM	5:00 PM	Savoy	SRM Student Activities Committee Breakfast Meeting	8:00 AM	10:00 AM	Savoy
Plant ID room set up	4:00 PM	11:00 PM	Majestic Ballroom				
SRM/WSSA Tapping the Top	5:00 PM	6:30 PM	Plaza Ballroom F				
SRM HSYF Professional Interaction dinner	6:00 PM	8:00 PM	off site				

# RANGELAND CAREERS - IT'S ALL ABOUT THE FUTURE!

The demand for professionals who can manage rangelands is currently very high. Nearly all students graduating with degrees in range science & management are finding opportunities for jobs. Many mid-career professionals also appear to be switching to rangeland management as a second career choice. Though the demand for quality new recruits appears high, there also appears to be a decreasing supply of job-ready seniors from university programs.

The Society for Range Management (SRM) is concerned about the future management of rangelands. We are especially concerned about the future of the workforce dedicated to managing these lands. Information from the Office of Personnel Management (OPM) reveals that at least 25-33% of the workforce currently classified as "Rangeland Management Specialists" (i.e. 454-series) within the US Forest Service (USFS), Bureau of Land Management (BLM), and Natural Resources Conservation Service (NRCS) will likely retire in the next 10 years. Who will fill their shoes?

In order to start addressing these concerns, SRM plans to once again expand its job hiring and career development opportunities at the 2010 63rd SRM Annual Meeting and Trade Show in Denver, Colorado February 7-11, 2010. This will be a joint meeting with the Weed Science Society of America (WSSA).

Preliminary information and scheduling for planned activities can be found at: [http://www.rangelands.org/jobfair\\_rangelandcareers.shtml](http://www.rangelands.org/jobfair_rangelandcareers.shtml)

## AGENCY ON-THE-SPOT HIRING PROGRAMS

Several federal agencies (USFS, BLM and NRCS) have successfully coordinated On-the-Spot Hiring programs at the Society for Range Management annual meetings in past years. For example, at the SRM 60th Annual Meeting in Reno, Nevada, 18 Rangeland Management Specialist (RMS, GS-454) entry level vacancies were successfully filled; at the Joint Annual SRM/AFGC meetings in Louisville, Kentucky in 2008, the BLM and USFS successfully filled 17 Rangeland Management Specialist (GS-454) entry level vacancies; and at the 62nd Annual Meetings in Albuquerque, NM last year over 40 positions were filled between both agencies. Of course several agencies are very interested in pursuing this opportunity again in Denver, CO during the week of February 7-11th, 2010.

### Federal Career Intern Program (FCIP)

Hiring authority for this program is provided under the Federal Career Intern Program (FCIP) which is designed to help agencies recruit and attract exceptional individuals into the Federal workforce. The program was created under Executive Order 13162 and hiring authority is permitted when recruiting at regional or national levels. Applicants may be university seniors (or graduates) and must be able to report to work within six months of the job offer. Successful candidates are typically offered entry level positions and may be converted to permanent status after two years of acceptable internship. During the internship, work assignments are designed to provide an orientation to the agency and offer progressive on-the-job specialized work experience and training targeted to the full-performance duties of the RMS. For more information, please visit the FCIP website at [www.opm.gov/careerintern](http://www.opm.gov/careerintern)

### Student Career Experience Program (SCEP)

Hiring authority is also provided under the Student Career Experience Program (SCEP) that provides Federal agencies with a consistent, regulated structure for hiring student employees. The SCEP provides career and study-related employment for a student enrolled (or accepted for enrollment) as a degree-seeking student in an accredited high school, technical or vocational school, two or four year college or university, graduate or professional school. For more information, please visit: [http://www.blm.gov/wo/st/en/res/blm\\_jobs.html](http://www.blm.gov/wo/st/en/res/blm_jobs.html)

### On-the-Spot Hiring Process

As in past years, Agency Job Outreach Notices, advertising available vacancies, will be posted on the SRM website about 2 months prior to the meetings. The intent is to notify individuals in advance allowing them to plan on attending the meetings in order to apply to positions of interest. In the past, advertised positions represented the Rangeland Management Specialist (454), Natural Resource Specialist (401), Wildlife Biologist (486), and Rangeland Technician (455) job series as well as Student Career and Experience Program (SCEP) positions. The array of positions available changes from year to year.

Once at the meetings, the entire process generally takes four days from Sunday to Wednesday. Applicants should plan to be available for interviews at any time during this period. Agencies will be present at the annual SRM RANGELAND JOB FAIR and the CAREER DEVELOPMENT WORKSHOPS on the first Sunday of the meeting to circulate job outreach notices as well as explain the agency hiring process to interested participants. By Monday noon most applications should be submitted, typically coming from graduating seniors or recently graduated young professionals. Agency teams of Human Resource Specialists will review and qualify submitted applications within one day.

During the next 2-3 days qualified applicants will be provided with ~ 30 minute interviews. The interview panels usually consist of regional foresters, managers and/or program leads delegated with hiring authority and representing all available vacancies. At the completion of the interviews, offers may be made to exceptional candidates with the intent to fill all available positions by Thursday.

### New Approach for 2010

In 2010 the BLM and USFS will try a new approach whereby individuals may be able to submit their applications about 2 weeks in advance of the meetings. This will then allow for applications to be reviewed and qualified in advance of the meetings. It is anticipated that all qualified applicants will then be contacted in advance of the meetings in order to schedule on-site interviews. This would also allow for hiring officials to be able to effectively set-up phone interviews with those applicants who are unable to attend the meetings. More information on the application submission process for this program will be forthcoming.

### Who to Contact

For preliminary agency-specific information please contact Linda Coates-Markle, BLM Liaison to SRM, Amanda Cameron, Rangeland Management Specialist, USFS, Leonard Jolley, USDA-NRCS Rangeland/Grazingland Specialist and/or Dennis W. Thompson, USDA - NRCS National Range and Grazing Lands Ecologist. Contact information can be found at: [http://www.rangelands.org/jobfair\\_rangelandcareers.shtml](http://www.rangelands.org/jobfair_rangelandcareers.shtml).

# RANGELAND CAREERS---Continued

## Agency Job Outreach Notices

Look for these on the SRM website at: [http://www.rangelands.org/jobfair\\_rangelandcareers.shtml](http://www.rangelands.org/jobfair_rangelandcareers.shtml) sometime early December 2009.

## 2010 RANGELAND JOB FAIR

Just as rangelands are diverse, so are related careers. Just look at the SRM membership as an example of this diversity! In order to better match job opportunities with job seekers, SRM will again expand employment efforts at the 63rd Annual SRM Meeting and Trade Show in Denver, Colorado. SRM announces the third annual 2010 RANGELAND JOB FAIR scheduled for Sunday February 7th, 10 am-6 pm. This is a free service for all SRM members and Trade Show participants. The mission of the RANGELAND JOB FAIR is to match prospective employers from the Federal Agencies, State and Provincial Governments, Private Industry, Academia, and Conservation Organizations with the high caliber of educated and enthusiastic prospects from SRM. We are also hoping to recruit potential employers from non-traditional sources such as the military. Attendance at the annual meetings at the Sheraton Denver Downtown Hotel this year is expected to be between 1000-1500 people. Approximately 25 percent of attendees will be students and young professionals.

The job fair will involve a full day on Sunday February 7th, 2010. Employers will be provided space to display employment information, distribute vacancy announcements and interact with job seekers. Registered participants will be provided with one 6-ft table for displays within a large exposition area. For an extra charge, we will also provide 4' X 8' display boards (see registration form). We will encourage all interested meeting attendees to drift through and browse the JOB FAIR between other scheduled activities, meetings and workshops. We do expect that all participants staff their tables/displays and be prepared to answer questions.

If you are interested in this program, or know of prospective employers who may be, please feel free to contact the JOB FAIR Coordinator, Linda Coates-Markle, BLM Liaison to SRM at [lcmarkle@rangelands.org](mailto:lcmarkle@rangelands.org) and/or 303-986-3309. To register for the 2010 RANGELAND JOB FAIR, please complete the reservation form which can be found at: [http://www.rangelands.org/pdf/AM10\\_jobfair\\_reg\\_form.pdf](http://www.rangelands.org/pdf/AM10_jobfair_reg_form.pdf) and return it to the address at the bottom of the form. Reservations will be accepted on a first-come, first served basis, and space is limited. The deadline for receipt of all reservations is Friday January 15, 2010. On-site registrations may be accepted, depending on available space, and will require payment of a \$100 late fee.

## CAREER OPPORTUNITIES ROOM (formerly EMPLOYMENT ROOM)

Sunday February 7, 2009 through Thursday February 11, 2010, 8:00 am - 10:00 pm. A special room where professional job announcements, graduate school opportunities, internships and seasonal vacancy postings, representing the diversified membership of SRM are posted for meeting attendee viewing. This room will be centrally located in efforts to facilitate all interested parties for the entire week.

## CAREER DEVELOPMENT WORKSHOPS

In addition to the successful Student Employment Workshop (now called the Rangeland Employment Workshop), where you can ask questions on how to really succeed in the job market, SRM is planning to host additional career development workshops. All workshops will be one to two hours in length and will be offered concurrently with the 2010 Rangeland Job Fair on Sunday afternoon, February 7th, 2010. Top professionals from both the private and public sectors of rangeland management have volunteered to guide these workshops to benefit SRM members.

### OPPORTUNITIES IN GRADUATE SCHOOL - 1:00pm - 2:00pm

**Facilitator: Ben Baldwin, Utah State University.**

This one-hour workshop will be offered for the second time at the 2010 meeting. Many undergraduate students, as well as younger range professionals, find themselves unsure whether they should pursue or continue in a job in the profession, or whether they would be better off earning a graduate degree. The answer will vary for each person, but this workshop will offer viewpoints that address the question from various angles. In fact, the workshop will focus on two important questions: How do I choose the right path for me: Graduate school or professional experience? And if I choose graduate school, how do I find the right program, funding and faculty advisor?

These questions will be addressed by a panel of speakers who will make brief presentations and field questions from the audience. Included on the panel will be university professors, current or recent graduate students, and field professionals who hire range graduates.

The target audience for this session is expected to include members of the Young Professionals Conclave as well as college juniors and sophomores who are just beginning to think about what might happen after graduation.



## **RANGELAND CAREERS---Continued**

### **RANGELAND EMPLOYMENT WORKSHOP - 2:00pm - 4:00pm (formerly known as the Student Employment Workshop)**

#### **Facilitators:**

**Ingrid Drieling, USFS, Bridgeport, CA**

**Jack Alexander, Synergy Resource Solutions, Inc., Belgrade, Montana**

**Randy Reichert, USFS, Greeley, Colorado**

Employers are looking for ethical, motivated, hard working persons who can think, solve problems, communicate effectively (all modes), work effectively on a team, and have good leadership skills. Yes, they want certain specific technical knowledge and skills, but they generally assume that a person has ample technical ability so that they can train them in the specific technical components of their job.

At this workshop each participant will be asked to bring a specific job application along with a cover letter and their resume that they developed for that specific job. The workshop will help students analyze their materials with discussions on how they may improve it. Further discussions will concentrate on the process of evaluating job announcements, gathering information, preparing check lists, and then writing the resume and cover letter, submitting the application, follow-up, and preparing for the interview.

Also at this workshop you can ask the questions on how to really succeed in the job market. This is a confidential and discreet workshop. You can ask the hard questions without potential employers present. Expect to get honest, straight-forward answers on what employers really look for.

Did you know that the average time spent on a resume by a future employer is 20 seconds? At this workshop a team of experienced range professionals will offer critical real life resume assessments with usable suggestions to help you learn how to become one of the people that gets 20 minutes of a future employer's time rather than 20 seconds.

Potential employees that attend this workshop will also learn about appropriate interview attire, the importance of networking, and having a business card. Attendees will also find out why people that serve on committees as students typically get job offers when they graduate.

If you would like to learn more about these things, we would like to see you at the Rangeland Employment Workshop.

### **RECRUITMENT AND HIRING WITHIN GOVERNMENT AGENCIES 4:00pm - 5:00pm**

#### **Facilitators:**

**Linda Coates-Markle, BLM-SRM Liaison, Wheat Ridge, Colorado**

**Amanda Cameron, USFS, Fort Collins, CO**

**Dennis Thompson, NRCS, Washington, DC**

**Leonard Jolley, NRCS, Beltsville, Maryland**

**Other Federal and State Agencies, TBA**

Students and professors alike often ask "What are agencies looking for?" and "How does the agency hiring process work?" These are good questions and the agencies are very interested in the opportunity to address these issues. Human Resource and/or Range Specialists from different agencies will be present to explain the hiring process from vacancy search to selection. Details will be covered regarding registration with the different on-line application sites, inputting quality, easy-to-read resumes and tips for strong responses to the vacancy questions. They will discuss the OPM classification series specific to rangeland management positions and how to interpret mandatory qualification requirements.

Land managers from different agencies will be present to discuss desired attributes of highly qualified applicants. Good grades are important but field experience and communication skills are even more important. Also addressed will be: "What does a hiring official look for in a potential applicant?" and "What types of questions are typically used during interviews and why?"

The intent of this workshop is for interested participants to walk away with a good general knowledge of the agency hiring process and perhaps remove some of the mystique and intimidation that may have previously surrounded it. We will also introduce the Agency Hiring-on-the-Spot program and discuss how this process will work at the SRM Annual Meetings in Denver, CO.



# **WORKING LANDSCAPES**

## **Providing for the Future**

**63rd Annual Meeting of the Society for Range Management  
and the 50th Annual Meeting of the Weed Science Society of America  
Sheraton Denver Downtown Hotel  
Denver, Colorado  
February 7-11, 2010**

**Monday, February 8, 2010 – 9:00 am to 12:00 Noon**

### **2010 PLENARY SESSION**

**“Opening Remarks” –Co-Chairs, Roy Roath, Society for Range Management and John Jachetta Weed Science Society of America**

**“Welcome and salient remarks”. -- Governor Ritter of Colorado (Invited) – Introduction of Secretary of Interior Ken Salazar (Invited)**

**Secretary of Interior, Ken Salazar (Invited)**

**“History of the Development of the West” -- Dr. Elliott West – Professor of history at the University of Arkansas. Author of “The Way to the West”, and “Essays on the Central Plains and Growing Up with the Country: Childhood on the Far-Western Frontier”, both of which received the Western Heritage Award for the best non-fiction book on the American West.**

**“Weeds in the Western Landscape” -- Dr. Richard Mack – Washington State University. A world authority on the invasion of plants into new regions, the circumstances that facilitate their persistence, and the reasons for an introduced plant to become invasive and damaging the natural environment, national economies and even human health.**

**“A Tour of Sustainable Landscapes in Colorado” -- Mr. John Fielder – Colorado’s premier nature photographer.**

**Adjournment**

Technical Program							
AT-A-GLANCE							
Committee/Activity	Start	End	Location	Committee/Activity	Start	End	Location
<b>Saturday February 6</b>				<b>Tuesday February 9 (Continued)</b>			
ESD Workshop	8:00 AM	5:00 PM	Windows	Technical Session - Watershed, Hydrology, Soils	1:00 PM	5:00 PM	Governor's Square 17
Riparian ESD Workshop	8:00 AM	5:00 PM		Technical Session - Rangeland Plants/Plant Materials	1:00 PM	5:00 PM	Spruce
				Invasive Plant Symposium Mixer - Poster Sessions	6:00 PM	8:00 PM	Plaza Ballroom DE and trade show area
<b>Sunday February 7</b>				<b>Wednesday February 10</b>			
RTEC Symposium	1:00 PM	5:00 PM	Governor's Square 11	Poster set up	7:00 AM	8:00 AM	Plaza Ballroom DE
<b>Monday February 8</b>				Symposium - Climate Change and PNV	8:00 AM	12:00 PM	Governor's Square 10
SRM/WSSA Plenary Session	8:00 AM	12:00 PM	Plaza Ballrooms	Technical Session - Fire Ecology	8:00 AM	12:00 PM	Governor's Square 11
Session 9: Weed Biology and Ecology	1:00 PM	4:00 PM	Denver	Technical Session - Grazing Management 1	8:00 AM	12:00 PM	Governor's Square 17
Session 11: Physiology	1:00 PM	4:00 PM	Gold	Technical Session - Restoration/Reclamation	8:00 AM	12:00 PM	Denver
Session 8: Formulation, adjuvant & application Technology	1:00 PM	4:00 PM	Century	OOS - Sustainable Rangelands - Monitoring as Part of Ranch Business Plan	8:00 AM	12:00 PM	Century
WSSA Symposium: "Impact of Herbicide - Resistant Weeds on the Agroecosystem"	1:00 PM	4:00 PM	Silver	SRM Symposium - Biodiversity and Plant Material Development	8:00 AM	12:00 PM	Gold
WSSA Workshop "Technology & Communication Skills for the 21st Century"	1:00 PM	4:00 PM	Colorado	SRM Symposium - Management Leading Bird Habitat	8:00 AM	12:00 PM	Columbine
Poster Session	1:00 PM	5:00 PM	Plaza DE	Session 4: Pastures, Rangelands, Forest, and Right-of-ways	8:00 AM	12:00 PM	Governor's Square 15
OOS - Conservation Management on Private Rangelands	1:00 PM	5:00 PM	Governor's Square 12	Session 9: Weed Biology and Ecology	8:00 AM	12:00 PM	Governor's Square 14
SRM Symposium - Energy Production, Infrastructure, Development	1:00 PM	5:00 PM	Governor's Square 14	Session 5: Wildlife and Aquatic Invasive Plant	8:00 AM	12:00 PM	Governor's Square 16
Technical Session - Rangeland Management	1:00 PM	5:00 PM	Governor's Square 15	Session 10: Biocontrol of Weeds	8:00 AM	12:00 PM	Governor's Square 12
Technical Session - Human Dimensions, Social Science	1:00 PM	5:00 PM	Governor's Square 16	WSSA Symposium: "Drift Minimization Technology"	8:00 AM	12:00 PM	Silver
SRM Symposium - Pastoralists and Property Rights	1:00 PM	5:00 PM	Governor's Square 17	Poster Session	8:00 AM	5:00 PM	Plaza Ballroom DE
Rangeland Restoration, Persistent Plants	1:00 PM	5:00 PM	Governor's Square 11	Section 10: Biocontrol of Weeds	1:00 PM	5:00 PM	Governor's Square 12
Technical Session - Remote Sensing/GIS	1:00 PM	5:00 PM	Spruce	Section 9: Weed Biology and Ecology	1:00 PM	5:00 PM	Governor's Square 14
Technical Session - Monitoring Assessment	1:00 PM	5:00 PM	Columbine	Section 4: Pastures, Rangeland, Forest & Right-of-Ways	1:00 PM	5:00 PM	Governor's Square 15
SRM Excellence in Range Management Poster Contest	1:00 PM	5:00 PM	Plaza DE	Section 3: Wildland and Aquatic Invasive Plants	1:00 PM	5:00 PM	Governor's Square 16
Leadership Development Committee's "Consensus Building Workshop - Learning by Sustainable Landscapes, Ecosystems, Active Production and Producers"	1:00 PM	5:00 PM	Tower Court D	WSSA Symposia: "Biology of Weedy and Invasive Species in Agroecosystems"	1:00 PM	5:00 PM	Governor's Square 11
	1:00 PM	6:00 PM	Grand Ballroom - Section 1	Section 13: Integrated Weed Management	1:00 PM	5:00 PM	Century
<b>Tuesday February 9</b>				WSSA Symposia: "Advances in Automation and Machine Guided Technologies for Precision Agriculture"	1:00 PM	5:00 PM	Silver
				Section 1: Agronomy	1:00 PM	5:00 PM	Columbine
Set up for Poster Session	7:00 AM	8:00 AM	Plaza Ballroom DE	National Grasshoppers Management Board - 2010 Annual Meeting	1:00 PM	5:00 PM	Gold
SRM Symposium - Applying State-Transition Models	8:00 AM	12:00 PM	Governor's Square 11	<b>Thursday February 11</b>			
Technical session - Rangeland Economics	8:00 AM	12:00 PM	Governor's Square 16	OOS - Sustainable Rangelands through Low Input Grassfed Production	8:00 AM	12:00 AM	Governor's Square 10
Technical Session - Wildlife Management	8:00 AM	12:00 PM	Governor's Square 12	Session 4: Pastures, Rangeland, Forests, and Right-A-Ways	8:00 AM	12:00 AM	Governor's Square 15
SRM Symposium Wind Energy and Wildlife (OOS)	8:00 AM	12:00 PM	Governor's Square 14	Session 5: Wildland and Aquatic Invasive Plants	8:00 AM	12:00 AM	Governor's Square 16
SRM Symposium/OOS - Targeted Grazing	8:00 AM	12:00 PM	Governor's Square 15	Session 10: Biocontrol of Weeds	8:00 AM	12:00 AM	Governor's Square 12
SRM Symposium - Community Based Conservation	8:00 AM	12:00 PM	Governor's Square 17	Session 9: Weed Biology and Ecology	8:00 AM	12:00 AM	Governor's Square 14
Session 1: Agronomic Crops	8:00 AM	12:00 PM	Columbine	Technical Session - Ecology 2	8:00 AM	12:00 AM	Governor's Square 11
Session 3: Turf and Ornamentals	8:00 AM	12:00 PM	Colorado	Technical Session - Grazing Management 2	8:00 AM	12:00 AM	Governor's Square 17
Session 11: Physiology	8:00 AM	12:00 PM	Gold	WSSA Symposia: "Weed Management in Organic Agriculture: Current Needs & Future"	8:00 AM	12:00 AM	Denver
Session 7: Teaching & Extension	8:00 AM	12:00 PM	Century	OOS - Larkspur, 100 Years of Research	8:00 AM	12:00 AM	Spruce
Section 13: Integrated Weed Management	8:00 AM	12:00 PM	Spruce	WSSA Symposia: "Dicamba Resistant Soybean: How Will It Fit?"	8:00 AM	12:00 AM	Silver
WSSA Symposium: "Advances in Regulations and Methods for Measuring Herbicide Soil Residues"	8:00 AM	12:00 PM	Silver	Section 6: Regulatory Aspects	8:00 AM	12:00 AM	Colorado
SRM/WSSA Invasive Species Keynote Symposium	8:00 AM	5:00 PM	Plaza Ballroom ABC	Carbon Sequestration on Rangelands	8:00 AM	12:00 AM	Columbine
Joint SRM/WSSA Poster Session: Invasive Species	8:00 AM	8:00 PM	Plaza Ballroom DE	SRM Open Space Symposium	8:00 AM	4:45 PM	Grand Ballroom - Section 1
Working Landscapes - Livestock, Agronomic Crops, Horticultural Crops, etc.	1:00 PM	5:00 PM	Grand Ballroom - Section 1	National Grasshoppers Management Board - 2010 Annual Meeting	8:00 AM	5:00 PM	Gold
Session 7: Teaching & Extension	1:00 PM	5:00 PM	Century	OOS - Sustainable Rangelands through Low Input Grassfed Production	1:00 PM	5:00 PM	Governor's Square 10
Session 11: Physiology	1:00 PM	5:00 PM	Gold	OOS - Medicinal Uses Veratrum	1:00 PM	5:00 PM	Spruce
Session 12: Soils and Environmental Aspects	1:00 PM	5:00 PM	Colorado	Carbon Sequestration on Rangelands	1:00 PM	5:00 PM	Columbine
Session 2: Horticultural Crops	1:00 PM	5:00 PM	Columbine				
WSSA Symposium: "Where did all the weeds go? A Global Perspective on Site Specific Weeds"	1:00 PM	5:00 PM	Silver	<b>Friday February 12</b>			
SRM Symposium - Applying State-Transition Models	1:00 PM	5:00 PM	Governor's Square 11	Rangelands Carbon Sequestration Workshop	8:00 AM	5:00 PM	Vail
Technical Session - Ecology 1 (Landscape)	1:00 PM	5:00 PM	Governor's Square 14				
SRM Symposium/OOS - Targeted Grazing	1:00 PM	5:00 PM	Governor's Square 15				
Technical Session - Climate Change	1:00 PM	5:00 PM	Governor's Square 16				

# Plant Invasions: Global Progress in the 21st Century SRM/WSSA Invasive Plant Species Symposium Tuesday, February 9, 2010

This symposium will explore our most current understanding of the processes and consequences of plant invasion. Invasive species are changing both our natural and cultural landscapes. Factors such as world trade, tourism, population expansion, development and climate change will continue to accelerate biological invasions. Please join us in exploring this important topic from a global perspective.

- The Invasion Paradigm
- Epidemiology of Plant Invasions
- Contribution of Genetics to Invasive Species
- Invasions Across a Global Landscape
- Ecological Consequences of Invasion
- Invasion in a changing Global Climate
- Fire and Invasion
- Bridging Scientific Perspectives

The Symposium will be followed by a reception.

## SEED SPECIALISTS

Specialists in Investments  
that Grow

At Curtis & Curtis Seed Inc., we're excited about the future for our customers. We understand your individual needs are unique and we want to be a part of the solution. At CCI, each of our staff members are problem-solvers by nature—talented professionals who truly value you, our customer.

Product Categories

Native Pasture Grasses Wheat Sorghum Alfalfa Lawn Grasses Millet	Irrigated Pasture Grasses Forage Blends Forage Sorghum Corn Triticale Oats
---	---



**CURTIS & CURTIS SEED INC.**  
4500 N. Prince  
Clovis, NM 88101  
[www.curtisseed.com](http://www.curtisseed.com) • 575-762-4759 • [chad@curtisseed.com](mailto:chad@curtisseed.com)

## WSSA Sponsored Workshops and Symposia

### Workshops:

#### **1. Workshop title: Technology and Communication Skills for the 21st century Marketplace.**

**Organizers: Chad Brommer, Emory University, Jason Weirich, Mississippi State University; Dave Horvath, USDA Agriculture Research Service Fargo, ND; Dawn Refsell, Valent U.S.A. Corp.; and the WSSA Professional Development Committee**

Open to all meeting registrants; limited to 30 participants. No fee for participation.

Where does technology fit into the marketplace of learning and outreach?

Sections of this workshop include: The power and pitfalls of social networking. Subtitle: How not to get fired using social networking tools; presentation and demonstration of Facebook's online software. Twitter is not a bird; it is your key to relevance; introduction and demonstration of the technology of Twittering. Included is a discussion of the integration of Twitter for monitoring your students (old and new), colleagues, shareholders, and family-friends into your day, without absorbing all of your time. Blogs are not just for pundits (Subtitle, Tying the web together as a gatekeeper). Blogs have been hijacked by the shrill and semi-informed; this session will show you how to use your blog to reach your professional goals and master the skills of an information gatekeeper. Blogs are the tie that can bind together the previous techniques and software presented in this workshop. Required items: Mac or PC laptop/personal computer (any operating system). Optional items: cell phone, camera, PDA, audio recorder, or iPod-MP3 player.

### Symposia:

#### **1. Symposium Title: Impact of Herbicide-Resistant Weeds on the Agroecosystem.**

**Organizer: William K. Vencill, University of Georgia.**

Increasing reports of herbicide-resistant weeds, weed shifts caused by herbicides, and controversies surrounding the introduction of herbicide-resistant crops have revealed a lack of understanding on these topics by scientists, regulatory officials, and the public. The objective of this symposium will be to present the state of knowledge on the development, management, and impact of herbicide-resistant weeds and weed shifts in conventional and herbicide-resistant crops. Emphasis will be on the impact of herbicide-resistant weeds in the agroecosystem.

#### **2. Symposium Title: Advances in Regulations and Methods for Measuring Herbicide Soil Residues.**

**Organizers: Dale Shaner, USDA Agriculture Research Service, Ft. Collins, CO and Jason Krutz, USDA Agriculture Research Service, Stoneville, MS.**

There have been many changes in recent years in the regulation of herbicide residue analysis for herbicide registration and re-registration as well as in methods to detect and quantify herbicide soil residues. New regulations in NAFTA, South America and Europe will have a major impact on maintaining the availability of present herbicides as well as the registration of new herbicides. There have also been many advances in methods for extracting and measuring herbicide residue from soil. Modeling herbicide behavior in the soil is an increasingly more important method for predicting how herbicides move in the soil and how they can contaminate water supplies, however the output of these models is dependent on the input and the phenomenon of enhanced herbicide degradation can have a major impact on the predictions of these models. This symposium was developed for the WSSA and SRM researchers who are concerned with soil-herbicide interactions as well as the regulations for re-registering present herbicides and the registration of new herbicides.

#### **3. Symposium Title: Where did all the weeds go? A global perspective on site-specific weed management.**

**Organizers: Trey Koger and David Shaw, Mississippi State University.**

A multitude of weed scientists have developed research and extension projects in the area of site-specific weed management over the past decade, with projects ranging from improving our understanding of the spatial distribution and patterns of weed populations, properties of weed population sites in landscapes, rangelands, and agricultural fields. Advances in site-specific weed management technologies has been synergistic with the proliferation of other site-selection technologies such as global positioning systems (GPS), geographic information systems (GIS), and remote sensing based sensors, and on-the-go patch sprayers. The state of current site-specific weed management technologies is to determine if practical, economical, and effective site-specific weed management programs can be developed and implemented on a global level. This symposium addresses current site-specific weed management technologies at the national and global scale.

#### **4. Symposium Title: Spray Drift Minimization Technology Symposium.**

**Organizer: Robert Klein, University of Nebraska.**

Spray drift is considered to be the most important issue by many State Departments of Agriculture. Spray drift is a lose-lose situation; drift may cause damage to areas around the treated area as well as reduces the amount of the product applied. Additionally, new regulations for water, endangered species, and other items have contributed to larger buffer area to mitigate the effects of spray drift. Recent developments in application technology including spray nozzle tips, greater ability in the maintenance of desired pressure, boom height control, pesticide formulation, additives, and the ability to put all or a number of these parameters together can minimize the amount of spray drift. This symposium addresses advances in formulation development and application technology to minimize spray drift.

## WSSA Sponsored Symposia -- Continued

**5. Symposium Title: Biology of Weedy and Invasive Species in Agroecosystems Competitive Grant Program: Case Studies. Organizer: Michael A. Bowers, Cooperative State Research, Education & Extension Service (CSREES), USDA.**

Since its inception in 1990, the Biology of Weedy and Invasive Species in Agroecosystems National Research Initiative (NRI) Program (in its present and previous incarnations) has supported more than \$50 million in research, education and extension activities focused on weedy and invasive species in croplands, pastures, rangelands, and forests. A hallmark of the program is its emphasis on using basic biology/ecology in the detection, control and management of weedy and invasive species. This session will feature some of the more recent projects in this lineage offered as exemplars and chosen to illustrate the genes to ecosystems approaches that have moved the science forward.

**6. Title: Advancements in automation and machine guided technologies for precision weed control**

**Organizers: Steve Young, Washington State University; Rick Boydston, USDA-ARS; Ed Peachey, Oregon State University.**

U.S. producers dedicated over 4 million acres of farmland to organic production systems in 2005. The increase in the number of acres of crops being grown organically has brought with it a growing need for more labor and non-chemical inputs for weed control. Currently, weed control is ranked as the number one production cost by organic and many conventional growers. Site-specific weed control in organic crop production would benefit greatly from robotic weed control systems. Machine vision and RTK GPS guidance systems are the latest technologies being researched for use in weed detection and identification. Other technologies include guidance, precision in-row weed control and mapping. The objectives of this symposium are to present the latest information on automation for site-specific weed control, provide a forum for scientists to interact with biosystem engineers and establish a new section entitled biosystems management and production or biosystems engineering platforms for field crop production.

**7. Title: Dicamba Resistant Soybean: How will it fit?**

**Organizers: Dave Mortensen and Richard G. Smith, Penn State University, Chris Boerboom, University of Wisconsin, Robert Hartzler, Iowa State University.**

Weedy species resistant to glyphosate have appeared at an increasing rate in response to increasing reliance on glyphosate for weed control in the major commodity crops. One solution to this problem is engineered dicamba resistant soybean and cotton. When employed commercially, glyphosate/dicamba stacked trait crops will allow an additional herbicide to be used on many glyphosate resistant species. Other herbicide resistant traits are also under development. Using a mix of highly focused presentations and facilitated discussion, the symposium will assess the emerging weed management needs, opportunities afforded by dicamba resistant soybean, and agronomic and environmental issues associated with widespread dicamba use in soybean. Presenters with expertise in weed management, herbicide fate, landscape analysis and environmental regulation will speak in the symposium from land grant universities, the herbicide and seed industry and environmental regulatory agencies.

**8. Title: Weed Management in Organic Agriculture: Current Needs and Future Prospects.**

**Organizer: Franck E. Dayan, USDA Agriculture Research Service, University, MS.**

Weeds have a greater negative impact on crop yields than any other agricultural pests and modern cultural practices rely heavily on the use of synthetic herbicides. However, public concerns about the potential health and environmental impacts of the use of synthetic pesticides have resulted in a recent surge in the popularity of organic approaches. Because of the paucity of natural alternatives to synthetic herbicides, weed control is the most pressing pest management issue in organic agriculture. Most organic methods rely on soil cultivation, hand hoeing, biocontrol, organic mulches, plastic (synthetic) ground cover, and the use of some non-selective burndown natural products. The objectives of this symposium are to increase the awareness of the various weed management methods currently available in organic agriculture and explore the potential development of new natural products suitable for weed management. This symposium will include presentations from government, academic, advisory and industry leaders in the area of weed management in organic agriculture with special attention to the opportunities for the development of new tools and new methods.

## SRM Symposia and Organized Oral Sessions

### **Symposium 1: Pastoralists and Property Rights.**

**Organizer: Maria Fernandez-Gimenez**

Around the world pastoral production systems operate successfully under a wide variety of different property rights regimes, including private property, public (state) property, various versions of common (community-owned or managed) property, and complex patchworks of all of these. However, many pastoral societies are undergoing or have recently undergone significant socio-economic or political change, leading to transformations in herders' and ranchers' rights to land, forage, water, stock driveways, and other crucial pastoral resources. Interestingly, in some regions dominated by private property and exclusive leasehold regimes, producers are reconstructing a commons of sorts in order to facilitate cross-boundary, landscape-scale management, while in other regions where common property or state property regimes have long flourished, policy-makers have implemented or are considering private property policies, or their functional equivalent in long-term individual leaseholds. Conflicting theories suggest, on the one hand, that the flexibility and mobility required for sustainable livestock husbandry in arid and semiarid landscapes call for collective ownership and management of vast areas, and on the other, that private property, and by extension land markets, are needed to provide pastoralists necessary incentives for sustainable stewardship and to ensure the most productive and economically efficient use of land. This symposium examines this paradox of pastoral land tenure (the simultaneous demands for tenure security and flexible access to spatially heterogeneous resources), bringing together pastoralists and scholars from multiple continents to reflect on their experiences with pastoral tenure transformations, and their implications for the well-being of livestock keepers and the lands they depend upon.

### **Symposium 2: Community-based Conservation on Rangelands.**

**Organizer: Robin Reid**

Community-based management and conservation of rangelands has been advanced as the one strategy to maintain movement of livestock herds, secure land access in communal rangelands, increase profitability of the pastoral enterprise and improve rangeland health in many dryland systems. Over the past decade, efforts to promote community-based rangeland conservation and management have proliferated throughout the world, with over 2000 community-based rangeland management groups organized in Mongolia during 1999-2006 alone. Yet, apart from mostly qualitative case studies, there are few rigorous, large sample size evaluations of these efforts, or few opportunities to foster cross-case learning. This symposium brings together scholars and practitioners from various regions of the world to share and discuss their experiences with community-based rangeland conservation and management, with the aim of identifying common threads, potential best practices, and needs and opportunities for broader collaborative research to document the process and outcomes of these efforts.

### **Symposium 3: Targeted Grazing – Applying the research to the land:**

**Organizers: Rachel Frost and John Walker**

The organized oral discussion entitled, "Targeted Grazing: Applying the Research to the Land", will focus on the practical application of targeted grazing as a vegetation management tool. The scientific background of targeted grazing has been presented and discussed, but the gap between theory and application needs to be bridged to empower land managers to make use of the emerging tool. The immense diversity of situations to which this tool can be applied necessitates the exchange of real-life experiences to promote learning among practitioners and to inform land managers of the successful programs and potential pitfalls to avoid. The intended audience is land managers, both public and private, and livestock managers and producers. Speakers will consist of several contract graziers with experience in providing land services in a diverse array of situations, from small-scale, highly managed parcels to watershed-scale management projects. Other speakers will expound on their experiences employing targeted grazing on lands they manage, both public and private. Public land administrators will reveal the challenges of employing targeted grazing on public lands and provide insight on what must be done to make targeted grazing a widely accepted management practice. Finally, we will conclude with a speaker panel and audience discussion. Through this event we hope to lay down the first planks of knowledge from experienced practitioners to bridge the gap between research and the application of targeted grazing as a tool to manage rangelands.

### **Symposium 4: Rangeland Restoration in the Presence of Persistent Invasive Plants.**

**Organizer: Jeff Fehmi**

### **Symposium 5: Climate Change and Potential Natural Vegetation:**

**Organizer: Peter Adler**

Land managers, federal agencies, and international aid organizations often recognize management targets and degradation based on ecological potential, historical range of variation, or potential natural vegetation. This relationship has been codified in U.S. rangeland management via ecological site descriptions (ESDs). Climate change may dramatically alter potential natural vegetation in many rangelands. Unless ESDs can be developed to anticipate and accommodate climate change effects, they could rapidly become obsolete. On the other hand, ESDs could serve as valuable tools for understanding how climate change effects are mediated by soil-geomorphic properties and existing vegetation condition.

## SRM Symposia and Organized Oral Sessions - Continued

### **Symposium 6: Management of Lekking Bird Habitat.**

**Organizer: Chad Boyd**

The current range of lekking birds, including greater sage-grouse, sharp-tailed grouse, greater prairie chickens and lesser prairie chickens, covers most of the rangelands in the western and central United States as well as portions southern Canada. All of these species are experiencing generalized population declines within their range, and management in the U.S. has proven difficult to the extent that all lekking species (or sub-species thereof) have been or are being considered for listing under provisions of the Endangered Species Act. The imperiled status of lekking birds has the potential to severely impact use and management of affected rangeland resources. While many publications have described in detail the decline of lekking bird populations and associated habitats, only limited information is available to suggest habitat management practices that benefit these species. This lack of information not only complicates matters for managers trying to increase habitat quality, but encourages a reactive approach to management of lekking birds that emphasizes the depth of the problem rather than the nature of the solution.

### **Symposium 7: Applying State and Transition Models Across Diverse Ecoregions.**

**Organizer: WERA-40, Clayton Marlow**

State and transition models (STMs) have been adopted by many federal land management agencies as a tool to facilitate assessment, monitoring and management of rangelands in the U.S. Although STMs offer improvements over the conventional range condition model for rangeland monitoring and assessment, they remain a work in progress, literally and figuratively. Many states are still in the process of developing their first drafts of STMs for ecological sites in their jurisdiction, and range scientists and managers struggle to operationalize and understand terms such as “state,” “transition,” and “threshold.” To some degree these challenges in STM development reflect larger debates in the range profession about the ecological drivers and processes at work in different ecoregions across the West, and the distinct ways that different systems respond to similar drivers. These challenges may also reflect differing assumptions about the purpose and uses of STMs, the appropriate sources of data or evidence to support their development, and the ways that these data are analyzed, interpreted, synthesized, and assembled into STMs. In this symposium we seek to advance the cross-regional dialog on STM development and application by presenting a series of case studies of STM development from diverse ecoregions across the west. We bring together scientists and managers who have worked with a variety of different data sources and approaches to STM construction in contrasting ecoregions to help elucidate the similarities and differences in the dynamics of these systems, the ways these dynamics are reflected in STMs, and the influence of management perspectives in defining states and transitions.

### **Symposium 8: Conservation Management on Private Rangelands.**

**Organizer: Dave Engle**

The challenge for natural resource managers and land owners of grasslands is to manage working agricultural lands to provide agricultural production and other ecosystem services while maintaining grassland ecosystem resiliency. While these mutual goals may seem competitive rather than complementary, recent advancements in the science of patch-burn grazing offer management strategies to achieve both goals. However, one major barrier to implementing these management strategies is our capacity to transfer what we've learned from public lands and experimental sites to private landowners and managers. A number of scientists are experimenting to discover key variables that are necessary to support the rangeland ecosystem under production agriculture conditions. These key variables include biota on the physical landscape and human beliefs, perceptions and actions that influence rangeland ecosystem resiliency. This symposium shares recent advances [e.g. patch-burn grazing] in rangeland management with a focus on the contrast between conservation management of rangeland and commodity management on privately owned rangeland.

### **Symposium 9: Wind Energy and Wildlife.**

**Organizer: Kirk Davies**

Wind energy is rapidly growing in the United States, as are concerns of its potential impacts to wildlife. The presenters in this session will discuss the impacts of wind energy development on wildlife and discuss some of the solutions that have been developed. This topic is of interest to the entire Society of Range Management membership. Public land managers are seeing greatly increased numbers of applications for wind energy development, ranchers and farmers are being approached for wind development on their properties, and general public is interested in green energy development.

### **Symposium 10: Biodiversity and plant material development.**

**Organizer: Jack Staub**

Plant improvement has historically played an essential role in the enhancement of rangeland ecosystems. Novel native and genetically manipulated plants have been used successfully for rangeland repair in a diverse array of disturbed ecosystems. Concepts, methods, and issues underlying rangeland improvement are not common knowledge among society members. This lack of understanding has led to misconceptions regarding the use of improved plant materials for repair of rangeland ecosystems.



## SRM Symposia and Organized Oral Sessions - Continued

### **Symposium 11: Sustainable Rangelands Through Low-Input Grassfed Production.**

**Organizer: Dan Nosal**

Market demand is rapidly increasing for sustainably-raised animal products. Grass-based livestock production is inherently sustainable as this production system relies on biodiversity and ecological complexity to maintain production without the use of costly inputs. The goal of sustainable rangelands and ranching is best achieved through a system of grassfed livestock production. Low-input grassfed production keeps land in permanent vegetation, which is more ecologically and economically sound than row cropping used for supplementing livestock confinement operations. Benefits of grassfed production for the environment include: reduced or eliminated pesticide use, greatly reduced soil erosion, increased soil fertility while eliminating commercial fertilizer application, increased carbon sequestration which helps combat the greenhouse effect and global warming, increased plant diversity versus monoculture crops, and improved wildlife habitat for native species. If the producer incorporates intensively-managed rotational grazing (also called management-intensive grazing or planned grazing) they can lower production costs, reduce animal stress, and boost the animal's immune system.

### **Symposium 12: Sustainable Rangelands: Planning, Monitoring, & Managing for Economic, Ecological & Social Benefits.**

**Organizer: Kristie Maczko**

This session features presentations from the Sustainable Rangelands Roundtable (SRR), the Wyoming Business Council (WBC), Wyoming State Grazing Board (WSGB), University of Wyoming extension, Grazing Lands Conservation Initiative (GLCI), USDA Forest Service Rocky Mountain Research Station (FS-RMRS), Natural Resources Conservation Service (NRCS), and Bureau of Land Management (BLM). These groups have formed the SRR ranch assessment group to focus on implementation of a 17-indicator ranch assessment framework for ecological, economic and social sustainability. The SRR ranch assessment framework emphasizes use of economic, ecological, and social ranch monitoring to inform goals elaborated in ranchers' business plans and conservation plans. University of Wyoming and WSGB staffs have worked with ranchers to implement ecological ranch sustainability monitoring using the 17 SRR ranch assessment indicators, as well as assisting with data analysis. The WBC provides ranchers with a detailed guide to developing a ranch business plan and also works with ranchers to help with creation of a formal business plan for their ranch, addressing social and economic aspects of ranch assessment. WBC's approach to business planning for ranches is elaborated in their publication, "Sustaining Western Rural Landscapes, Lifestyles, and Livelihoods." Ranchers who have benefited from participation in business planning processes and ecological monitoring will join the SRR ranch assessment group in sharing their experiences.

### **Symposium 13: Energy Production - Infrastructure and Development.**

**Organizer: Joel Brown**

### **Symposium 14: Larkspur - 100 Years of Research, Perspectives and Future Directions.**

**Organizer: Daniel Cook**

Larkspur (Delphinium) species are members of the Ranunculaceae family of plants that are commonly known as the buttercup family. Larkspurs are the most serious toxic plant problem in the high plains, foothill, and mountain rangelands of the western United States. The toxins in larkspurs are norditerpene alkaloids. Although the scope of the problem caused by toxic larkspur varies from year to year, the overall losses of cattle due to larkspur have remained remarkably consistent over time. Documented losses range from 2% to 5% and as high as 15% in places with large stands of toxic larkspur. Although the death of livestock is an obvious contribution to total dollar value losses, additional factors must be considered. The symposium will provide an overview of the genus Delphinium in the intermountain west, current management recommendations, and current research in regard to larkspur poisoning.

### **Symposium 15: Producers Landscape Management.**

**Organizer: Robbie La Valley**

### **Symposium 16: Maintaining and Managing Working Landscapes of the West— A Range of Perspectives.**

**Organizer: Roy Roath**

This program brings you a variety of perspectives about why "Working Landscapes" in the west is critical to sustaining the values that we embrace and are so dear to us. Each speaker brings a special viewpoint contributing to understanding the factors that affect and change working landscapes but are also part and parcel to these landscapes. This will be your opportunity to learn from each of the speakers but in a cumulative way, understand the pathways that are our past, current, and future of these landscapes. We invite each of you to come, learn and participate in the program.

### **Symposium 17. Politics, science and management of Carbon Sequestration on Rangelands.**

**Organizer: Matt Reeves**

## **SRM Symposia and Organized Oral Sessions - Continued**

### **Symposium 18: Reclaiming Formerly Irrigated Farmland.**

**Organizer: Julie Elliot**

Colorado and other upstream and headwater states seem to be in almost constant water supply litigation from their downstream neighbors. These lawsuits seem to be trending toward providing water instead of money as a settlement. Additionally, urban areas are looking farther and farther away from home to meet their growing water needs. Irrigated cropland is one of the biggest water users in the west. Irrigators tend to be an unorganized group and therefore an easy target for water purchasers and water litigation. As a result, this land use is going to be subject to increasing pressure and even orders to 'cease and desist' irrigation practices. Some irrigated fields have such high saline/sodic levels that growing dryland crops will not be possible. Other fields were only arable because of irrigation – without water crop production will not be profitable and/or the soils will erode and destroy the seed bed and germinating plants. For hundreds of thousands of acres in Colorado alone, dryland farming is not an option. The only choice for landowners will be to either let the land 'go-back' on its own or to actively pursue revegetating the land. For Highly Erodible Lands (HEL), finding effective methods of stabilizing dewatered lands is absolutely essential. Uncontrolled erosion will result in blow outs and drifting onto the surrounding rangeland. Such erosion will destroy the wildlife habitat and decrease the grazing value of the surrounding land. In NE Colorado, early experience using traditional grass planting methods for CREP and EQIP retirements has yielded poor results. The cause is unclear, but high nitrogen levels and N turnover rate, weed competition, low carbon to nitrogen ratio, low soil organic matter, and reduced water holding capacity of dewatered lands are suspected culprits. Much of the dewatered land along the Arkansas still lies barren from water sales decades ago. Western Nevada has struggled with barren dewatered land for 60 years in some cases.

## **Science and Management for Open Space Grasslands**

**Thursday, February 11, 2010**

This day-long symposium will focus on Managing Open Space in Urban and Suburban Environments. This program will provide new insights on Open Space Management and the associated science to SRM members, open space professionals, county and municipal officials, open space advisory councils, citizens and special interest groups interested in the management of open space grassland resources. One of the avenues we will use to invite folks is through the Colorado Open Space Alliance (COSA). COSA is a statewide organization of publicly funded local and regional open space programs, working cooperatively to share information, create public awareness and foster partnerships needed to protect and preserve open space. Morning topics will deal with ecological processes and the role of ecological disturbance in grasslands. The afternoon sessions will consist of applications of science to management; managing for desired outcomes, human influence on desired outcomes and integrating cultural values into the management of open space lands. The combination will provide new working knowledge and understanding of the complexities of Open Space management to all the participants. Please join us for this landmark program.

This is a ticketed event with a small charge to help offset the cost of food and beverages. Please be sure to check off the box for the "Open Space Symposium" on the registration form.

## **Producer Forum-Sustainable Landscapes, Ecosystems, Active Production and Producers**

**Monday, February 8, 2010**

This one-half day symposium will cover a technical assessment of Poisonous Plant Research, a Viewpoint of Working Landscapes, Research, Long Term Stewardship and Producers, a Viewpoint of Grazing Done Right and a Panel Discussion from producers and researchers presenting information and case examples of Species Richness, Profit, and Working Landscapes.

## OPTIONAL SKI PACKAGES TO BRECKENRIDGE

The word quaint might have been invented in Breckenridge. Its main street could be a painting of what a mountain resort town ought to look like. The oldest and largest town in Colorado's famous Summit County started out, like many, as a mining town, and locals aren't about to forget it – there are 250-plus buildings on the National Historic Register. Four mountain peaks flank the town, providing 2,358 acres of the best skiing anywhere and enough variety to suit even the most seasoned skier. Nordic centers cater to cross-country skiers and snowshoers, as well. When you finish enjoying the sports of winter, be sure to walk down the quaint main street, do some window-shopping and admire the well-preserved architecture. Definitely be sure to bring your camera.

For our pre- and post-conventioners that want to spend an overnight stay in this beautiful little town, we are offering a stay at The Great Divide Lodge. The Great Divide Lodge offers the amenities required of even the most seasoned traveler in a convenient central location. This property is a scenic two-block walk to Main Street Breckenridge, while a mere 50 yards to the chairlifts of the Breckenridge Ski Resort's Peak 9 Base Area. With a stop on the town's free shuttle route and complimentary hotel shuttle service, all of Breckenridge is within easy access. Please see the link below for more information on Great Divide Lodge <http://breckresorts.com/greatdividelodge/info/rooms.asp>

### **Pre-Convention Package**

Package includes one night stay with tax, and a one day lift ticket. (Ground transportation from Denver will be on your own.) (Must be booked by Jan. 5, subject to availability).

\$ 215.00 per person based on two per room if staying Feb. 5th or 6th

### **Post-Convention Package**

Package includes one night stay with tax, and a one day lift ticket. (Ground transportation from Denver will be on your own.) (Must be booked by Jan. 12, subject to availability)

\$ 227.00 per person based on two per room if staying Feb. 13th or 14th.

### **One Day Package**

Depart Denver Sheridan Hotel at 7am, depart Breckenridge Ski Area at 4pm. Your ski host will be Colorado SRM member, Vikie Branch, who is also a former Breckenridge PSIA ski instructor.

\$144 per person Feb. 6 or 7. Includes ground transportation from Denver to Breckenridge and lift ticket (minimum of 30 participants per day deadline Jan. 5). Rental fees and advance rentals can be reserved through [www.rentskis.com](http://www.rentskis.com).

## ***“SRM’s Taste of Colorado Social”***

This is the pinnacle event of the 2010 meeting! Instead of the traditional banquet we’ve had each year, this year dinner event will be different. Changing tastes of our members, coupled with the high priced banquets of recent years, have led to a new concept –“the NON-BANQUET”. This year’s event will be a fun buffet style dinner in a “boots-and-jeans” atmosphere. Also “new” --the banquet will be held away from the hotel, just down the street at the fabulous Colorado Convention Center.

John Stulp, Colorado Agriculture Commissioner, will be your host, along with the Colorado Section. For dinner, we proudly present a collage of foods -- Colorado beef, lamb and pork and vegetables—to Colorado wines and beers. Colorado commodity groups will be on hand to sponsor this event, and share information on their products. You’ll enjoy the sounds of “Crowboy” at the pre-dinner reception (6:00 -7:00 pm) and after dinner listening/dancing. Some stories and skits are also planned.

As you may have noticed elsewhere in this publication, the annual Honor Awards ceremony will not take place at the dinner, but will occur in the hotel, earlier in the day. You’ll have the opportunity to meet and congratulate these deserving award winners at “SRM’s Taste of Colorado”. Be a part in this landmark event – you’ll be glad you did! The room will hold a maximum of 1,000 participants. Sign up today!

Note- the Colorado Convention Center is easy to get to: just 5 block’s walk or take the free 16th Street shuttle. A map will be provided at the meeting. For those needing assistance (only) a shuttle van will run between 5:30 to 9:30.

### **DANCE:**

#### **Woodie Procell & the Snowy River Band**

The Snowy River Band is led by former professional rodeo clown, Woodie Procell. This very talented bunch of guys has a varied music list that includes not only some high energy country but cajun, bluegrass and rock & roll with even a few rodeo favorites added along the way.

The band has opened for several national acts including: Roy Clark, Asleep At The Wheel, The Nitty Gritty Dirt Band, Trick Pony, Aaron Tippin, Lonestar, Chris LeDoux, Blackhawk, and Joe Nichols.

Members of the band are :

Barry Wadley on Lead Guitar & Vocals

Chris Duke on Fiddle & Vocals

Woodie Procell on Guitar & Lead Vocals

Robert "Skunk" Honeycutt on Drums & Vocals



## 2010 ANNUAL MEETING COMMITTEES

	SRM	WSSA
<b>GENERAL CO-CHAIRS</b>	Roy Roath Lana Pearson	John Jachetta Dale Shaner
<b>HOTEL LIAISON</b>	Scott Woodall Kim Stine	Dale Shaner Kate Counter
<b>FINANCE</b>	Andy Pelster Mary Murphy	Joyce Lancaster Anita Dille
<b>SPONSORSHIPS</b>	John Cantlon Vickie Branch	Dale Shaner John McGregor
<b>LOGISTICS AND OPERATIONS</b>		
Co-Chairs	Rob Alexander Andy Pelster	Dale Shaner
Signs	Joe Trlica	
Transportation	Dan Nosal	
Technical Tours	Harvey Sprock	
Banquet/Meals	Scott Woodall	Joyce Lancaster
Volunteers	Josh Saunders	Scott Nissan
<b>PROGRAM</b>		
Co-Chairs	John Mitchell David Wheeler	Rita Beard John Jachetta
Program Operations	Dennis Child	Joyce Lancaster
Plenary Session	Roy Roath John Mitchell	Rita Beard John Madsen
Invasive Plant Symposium	John Mitchel	Rita Beard Rod Lym
SRM Technical Sessions/Symposia	Dennis Child	
WSSA Technical Session/Symposia		John Jachetta
Poster Session	John Mitchell David Wheeler	Sharon Clay Jason Krutz
Preconvention Trailboss	Gary Frasier	
<b>PRODUCER ACTIVITIES</b>	Robbie LeValley	George Beck
<b>SPECIAL EVENTS/ACTIVITIES</b>		
Co-Chairs	Tom McClure Vickie Branch	Phil Banks Joyce Lancaster
International Program	Maria Fernandez Gimenez Herman Garcia	
WSSA Special Events		Lori Wiles Joyce Lancaster
Trade Show Mixer	Tom McClure	
WSSA/SRM President's Reception	Don Kirby	David Shaw
Silent Auction	Tom Matza	
Companion Activities	Jodie Stockett	
<b>STUDENT ACTIVITIES</b>		
Co-Chairs	Ben Berlinger	Sarah Ward Greg MacDonald
<b>EMPLOYMENT-Chair</b>	Linda Coates-Markle	
<b>PUBLIC RELATIONS</b>		
Co-chairs	Dave Tippetts Gary Frasier	Joyce Lancaster Dale Shaner Tony White
Rangeland Articles	Gary Frasier	
<b>TRADE SHOW</b>	Don Hijar Gary Frasier	

Coyote Cats Deer Goats



V3

- Remote data download
- Mortality sensor
- VHF beacon
- Multi-day Time schedule

Low cost GPS collars ■

**WWW.KEDZIG.COM**

**KEDZIG**  
Kedziora Innovation Group



V2

Cattle Horses Sheep Bears

Photo by Christopher Brennan



**Pawnee Buttes Seed Inc.**

**We sell a lot more than a bag of seed.**



Pawnee Buttes Seed, Inc. provides native and introduced grass, forb, and shrub seed for reclamation, pasture, turf and wetlands.

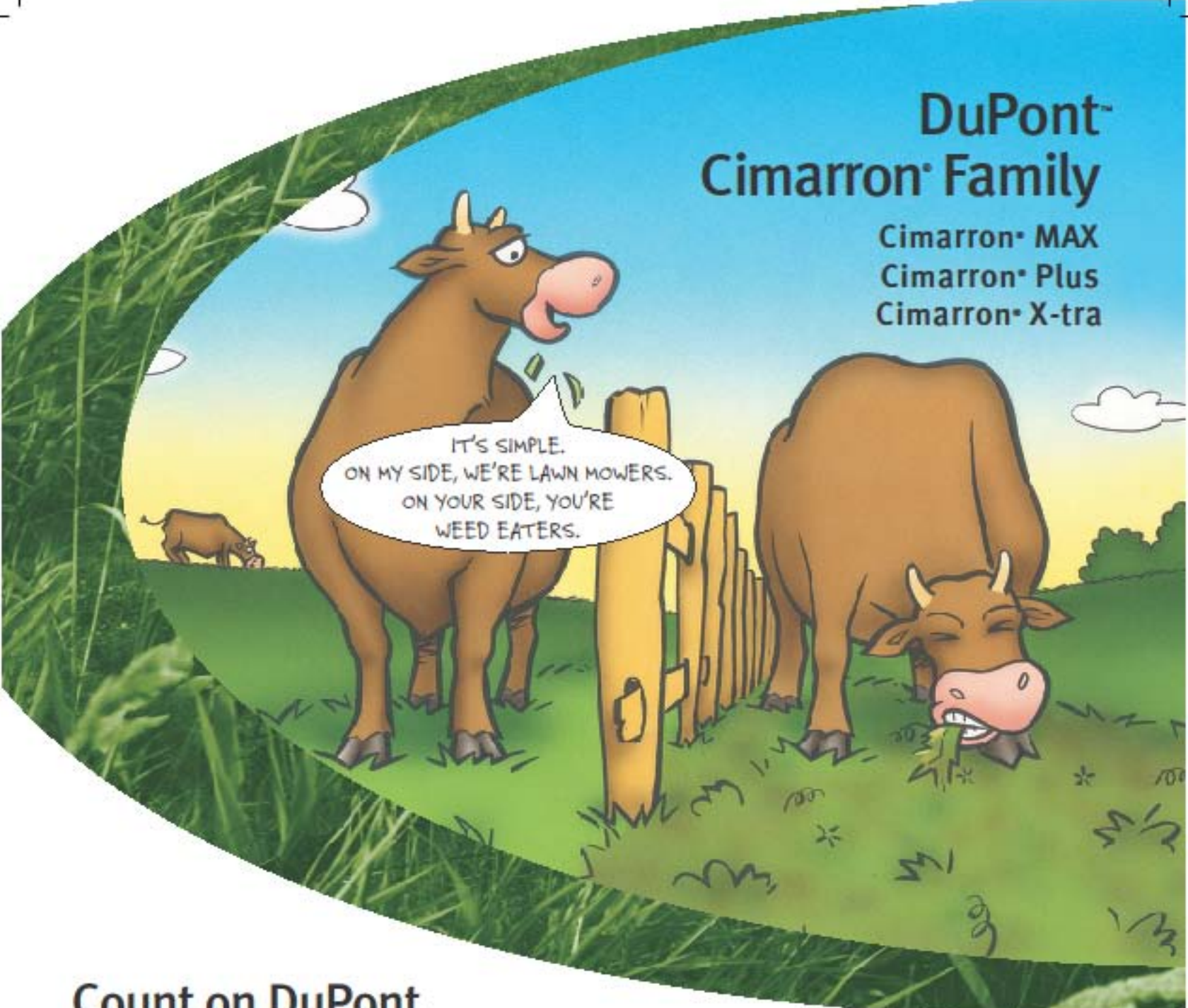
Our emphasis is on educating our customers on proper management techniques to ensure grass stand longevity and conservation of our natural resources.

Don Hajar, Manager

PO Box 100 • 605 25th Street • Greeley, CO. 80632  
(800) 782-5947 • (970) 356-7002 • Fax (970) 356-7263  
email: info@pawneebuttesseed.com  
www.PawneeButtesSeed.com

# DuPont<sup>®</sup> Cimarron<sup>®</sup> Family

Cimarron<sup>®</sup> MAX  
Cimarron<sup>®</sup> Plus  
Cimarron<sup>®</sup> X-tra



IT'S SIMPLE.  
ON MY SIDE, WE'RE LAWN MOWERS.  
ON YOUR SIDE, YOU'RE  
WEED EATERS.

## Count on DuPont for more forage production

For cleaner, green pastures that your cattle will love to graze, count on DuPont. With the Cimarron<sup>®</sup> family of herbicides from DuPont you'll get brush management and broadleaf weed control that you can count on to improve pastures and maximize forage — which means more weight gain for your cattle and, ultimately, more money in your pocket. Cimarron<sup>®</sup> herbicides won't harm most grasses, and there is no waiting period between application and grazing for beef cattle. See your local DuPont dealer.

[cimarron.dupont.com](http://cimarron.dupont.com)

DuPont<sup>®</sup> Cimarron<sup>®</sup> brands may not be registered for sale or use in all states. See your local DuPont retailer or representative for details and availability in your state.

Always read and follow all label directions and precautions for use.

The DuPont Oval Logo, DuPont<sup>®</sup>, The miracles of science<sup>™</sup> and Cimarron<sup>®</sup> are trademarks or registered trademarks of DuPont or its affiliates.

Copyright © 2009 E.I. du Pont de Nemours and Company. All Rights Reserved. LANDM014995P273AVA



*The miracles of science*

# FS FORT SUPPLY TECHNOLOGIES

EFFECTIVE ANIMAL TRACKING SOLUTIONS



**FaST TAG™** is a long range radio frequency identification ear tag with a read range up to 0.5 miles. The tag can be read using a hand held and Bluetooth® antenna or remote monitoring station with customizable antenna configurations. Locate, identify and count from a distance or remotely monitor animal movements.



Hand Held Reader



Remote Monitoring Station



Simple Application

[www.fastartag.blogspot.com](http://www.fastartag.blogspot.com)



**FaST EID™** is an electronic identification management program that is designed to run on a ruggedized hand held PC. The program is fully customizable and loaded with features that are tailored for managing livestock and wildlife. The system is compatible with all major brands of passive EID tags and microchips (134 & 125 KHz) and Bluetooth® or serial wand and panel readers. Built in printer features allow users to print customizable labels and/or reports directly from the hand held unit in the field.



[www.fasteid.blogspot.com](http://www.fasteid.blogspot.com)

Fort Supply Technologies  
1773 W. 200 N.  
Kaysville, UT 84037



1-888-650-6446  
[www.fort-supply.com](http://www.fort-supply.com)  
[info@fort-supply.com](mailto:info@fort-supply.com)